











## Wildcat cagers fall short in road bid against South Dakota State 82-62

The Wildcats battled another formidable opponent last Saturday evening, Dec. 8 on the road at Brookings, S.D. where they fell to South Dakota State University 82-62.

Cool shooting hurt Wayne State in the loss, as they hit just 22 of 71 from the floor for 31 percent, compared to a 53 percent shooting average for South Dakota on 29 of 55 from the floor.

South Dakota opened up scoring early on a free throw but the Cats claimed a 14-12 lead midway through on a pair of baskets by John Thomsen and Vince Tillo.

Wayne then gave up an 8-0 scoring spree to South Dakota to give the host the advantage which they maintained into the intermission, 34-26.

In the second half, South Dakota saw their lead swell to as many as 17 points with about 15 minutes remaining before shrinking to six points with 6:49 left when WSC guard

Mike Daley hit a pair of freethrows. South Dakota then took advantage of a Wildcat dry spell and outscored Wayne State 25-11 to lift themselves to the win.

Junior forward Calvin Sprew led the Wildcat scoring column with 15 points, backed up by John Thomsen with 14 points and Tracy Penn with 11 points.

Hitting the boards for the Cats were Vince Tillo with 10 rebounds and Sprew with eight rebounds.

South Dakota posted five players in double figures, led by Mark Schultz and Mark Tetzlaff with 15 points each.

"We shot poorly from the field," said Wildcats Coach Rick Weaver. "That was due in part to South Dakota State's zone defense."

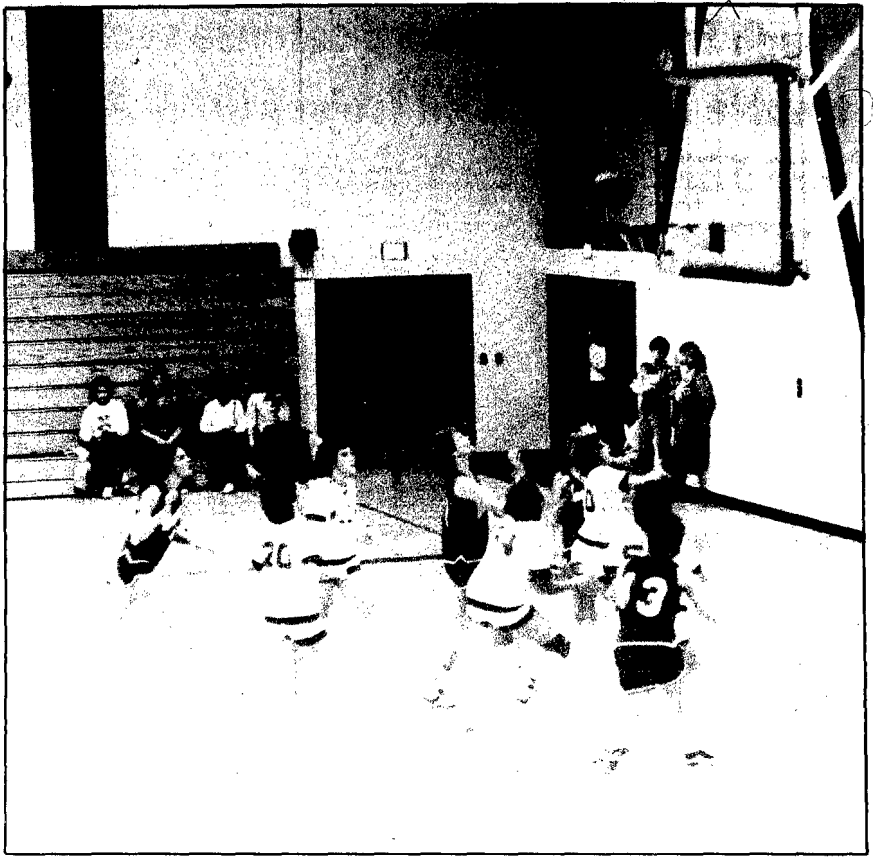
He added that the size of the South Dakota State line-up was also a factor in determining the outcome of the game.

The Cats wrapped up the first portion of

their 1984-85 schedule with a 95-86 win over the Warriors of Midland Lutheran College Tuesday night. A full account of the game and statistics will appear in the weekend edition of The Wayne Herald.

Their next action will come during their two week tour of Europe Dec. 30 through Jan. 11.

Wayne State SDSU	26	36-62			
	43	48-82			
<b>WCS</b>	<b>FG</b>	<b>FT</b>	<b>PTS</b>	<b>R</b>	<b>FLS</b>
Thomsen	7-14	0-0	14	5	5
Sprew	4-10	7-7	15	8	3
Tillo	3-8	2-6	8	10	5
Gooch	0-2	0-0	0	0	5
Penn	5-22	1-2	11	1	2
Daley	1-6	6-6	8	0	1
Radig	2-6	0-0	4	2	2
Vieseimeyer	0-0	2-2	2	2	4
<b>Totals</b>	<b>22-71</b>	<b>18-24</b>	<b>62</b>	<b>35</b>	<b>31</b>
<b>SDSU</b>	<b>29-55</b>	<b>24-33</b>	<b>82</b>	<b>54</b>	<b>24</b>



Photography: Jim Marsh

ALL EYES ARE on the basket after Wayne puts up a shot against West Point.

## Allen loses defensive battle to Newcastle

In a tough defensive battle, the Allen Eagles ended the night on the low end of the score in a 34-22 tussle with Newcastle Tuesday evening.

Allen Eagles' Coach Gary Troth termed the game as a defensive struggle throughout, with Newcastle presenting a stiff 1-3-1 defense which the Eagles had difficulty scoring against, especially at the end of the game.

Scoring in the game was knotted at the end of the first quarter, 6-6 and again at the end of the first half, 12-12.

Both teams remained even throughout most of the third period before Newcastle pulled a narrow two point lead at 18-16 going into the final quarter.

The Raiders then began a 16-6 scoring spree in that fourth quarter which widened their lead and aided in the winning margin. "We had trouble with their defense

throughout the game, but for the first three quarters we were also playing good defense, so things remained pretty even," said Troth. "Toward the end of the game Newcastle began making baskets and we became less patient on offense because we were trying to come back and had a poor shot selection."

Pam Heckathorn and Barb Hansen each scored six points in the effort, with Denise Magnuson and Mary Oswald contributing four points each. Oswald also led on the boards with six rebounds.

"We really don't have one dominating person on offense," said Troth. "We try to work the ball in for the good shot while we're out there and it doesn't matter to us who takes it."

Allen came out on the end of the reserve game score with a 26-17 victory over Newcastle. Leading the junior varsity was Kris Blohm with eight points.

The Eagles will go on the road for their next game on Tuesday, Dec. 18 when they meet with the Lady Knights of Homer.

Newcastle	6	6	6	16-34
Allen	6	6	4	6-22
<b>Allen</b>	<b>FG</b>	<b>FT</b>	<b>F</b>	<b>TP</b>
De Magnuson	2	0	1	2
Di Magnuson	0	0	2	0
Oswald	1	2	1	4
Boyle	0	0	0	0
Heckathorn	2	2	3	6
B. Hansen	3	0	1	6
Erwin	0	0	0	0
Harder	1	0	1	2
Blohm	0	0	0	0
<b>Totals</b>	<b>9</b>	<b>4</b>	<b>13</b>	<b>22</b>
<b>Newcastle</b>	<b>15</b>	<b>4</b>	<b>13</b>	<b>34</b>

## Low shooting percentage sends Wayne girls tumbling in 41-23 road loss to West Point

The Blue Devil girls basketball team found itself on the short end of a 41-23 score Monday night in a game with the Cadets of West Point High School.

Shooting again appeared to be the stumbling block for the Wayne squad, as they hit just 10 of 61 shots from the floor for a chilly 16 percent. They fared little better from the charity stripe, netting three of 15 for 20 percent.

West Point led the game from early on, taking a 10-4 first quarter margin before Wayne came up with nine points in the second period to narrow the lead to 18-13 at the intermission.

WAYNE FELL HARD in the third quarter, scoring just four points to the Cadets' 12 points, and West Point opened up

a sizable lead to take them through the final period for the win.

Leading scorers for the Blue Devils were Lisa Jacobson and Shelby Pick with six points each. Jodi Dittman added five points, Sonya Skok in with four points and Kerri Corbit with two points.

Pick also led in the rebounding department for Wayne's 18 boards.

West Point scoring was headed by Beth Sauer with 11 points.

In the reserve contest Wayne was tacked with a 28-21 loss by West Point.

Leading scorers for the junior varsity included Lori Jacobson, Missy Jones and Lusia Keating, each with five points. Top rebounder was Jennifer Wessel with eight boards.

Next up on the schedule for the Blue Devils is a game with the Laurel Concord

Bears tonight (Thursday), and a contest against Columbus Lakeview on Tuesday, Dec. 18 at home.

Wayne	4	9	4	6	-23
West Point	10	8	12	11	-41
<b>Wayne</b>	<b>FG</b>	<b>FT</b>	<b>F</b>	<b>TP</b>	
Lo Jacobson	0	0	2	0	0
Li Jacobson	2	2	4	3	6
Ditman	2	1	2	4	5
Corbit	0	0	0	1	0
Jones	0	0	0	0	0
Moore	0	0	0	0	0
La Keating	0	0	1	3	0
Skokan	2	0	3	5	4
Corbit	1	0	0	2	2
Pick	3	0	0	2	6
<b>Totals</b>	<b>10</b>	<b>3</b>	<b>15</b>	<b>18</b>	<b>23</b>
<b>West Point</b>	<b>18</b>	<b>5</b>	<b>14</b>	<b>14</b>	<b>41</b>

### Experience pays off

## Second place finish for Wayne matmen

The experience gained thus far in the young wrestling season paid off for the Wayne grapplers over the past weekend with a second place finish in the West Point Invitational wrestling tournament.

"We did better in this tournament than we did earlier, and I think that the experience we got at the first one helped out a lot," said Blue Devil Coach Don Koenig.

David City Aquinas won the nine-team competition, outdistancing the field with a total of 181 points. Wayne finished in the runner-up spot with 123 1/2 points, followed by Plainview in third with 103 points and Oakland-Craig in fourth with 88 1/2 points.

The Blue Devils registered champions in three weight classes. Junior Mark Janke won his championship final at 112 pounds with a 3-0 decision over Bill Bruck of David City Aquinas.

At 167 pounds, Tim Book maintained his undefeated mark with a pin over Joe Kallhoff of Neligh at 1:10 in the match.

Kevin Koenig also remained undefeated at 185 pounds with a 8-0 decision over Eric Luenders of Plainview.

Wayne's Gregg Elliott took second place at 155 pounds, losing by a pin to Mark Moset of Neligh at 1:30 in the match.

In the consolation rounds, Todd Dorcey won third place at 138 pounds with a pin over Rich Ruhl of Plainview at 4:30 in the match. Robbie Gamble at 119 pounds lost his consolation match to Andy Gustafson of Oakland-Craig in a pin at :51, and Terry Schulz lost his match at 132 pounds in a 5-0 decision to Gene Ohlrich of Plainview.

Senior Kevin Koenig was named the tournament's outstanding wrestler in a vote of the coaches taken at the invitational.

"We placed a little higher than I had expected, but we're getting things on track and it looks good for us right now," said Koenig.

Wayne has a tough test ahead of them in the coming week, including a dual with South Sioux City Thursday night in Wayne, and an invitational at South Sioux High on Saturday, Dec. 15.

"The teams at the tournament Saturday will be mostly Class A schools, and one of the toughest we'll face this season. I'm also expecting the dual with South Sioux to be a very close one," Koenig added.

WEST POINT TEAM STANDINGS	
David City Aquinas	181 points
Wayne	123 1/2 points
Plainview	103 points
Oakland-Craig	88 1/2 points
Neligh	84 points
Ft. Calhoun	70 points
West Point	68 1/2 points
Faithor (Managan)	38 1/2 points
West Point CC	10 points

# 1984 Wayne State Holiday Basketball Tournament

**December 26, 27, 28**

**— Ticket prices —**

**Passes (good for all three days)**  
**Adult \$5 Family \$12 Student \$3**

**Available at First National Bank, State National Bank and the Rusty Nail**

**At the door (good for one day only)**  
**Adults \$3 Students \$2**

### Class B Boys

Pierce 7 p.m. vs South Sioux City

Championship Dec. 27, 8:30 p.m.

Wayne 8:30 p.m. vs Hartington CC

Consolation Dec. 28, 1:45 p.m.

### Class C Boys

Lyons 7 p.m. vs Stanton

Championship Dec. 26, 6:45 p.m.

Randolph 8:30 p.m. vs Winside

Consolation Dec. 28, 12:15 p.m.

### Class B Girls

Hartington CC 4 p.m. vs Wayne

Championship Dec. 26, 5 p.m.

South Sioux City 3:30 p.m. vs Pierce

Consolation Dec. 27, 4:20 p.m.

### Class C Girls

Stanton 1 p.m. vs Winside

Championship Dec. 26, 3:15 p.m.

Randolph 7:30 p.m. vs Lyons

Consolation Dec. 27, 3 p.m.

The Wayne Herald, Thursday, December 13, 1984

## Tough Emerson-Hubbard defense spells trouble for Wakefield Trojans in 36-27 loss

The Wakefield girls basketball team had its hands full against the Emerson-Hubbard defense on Monday night in a 36-27 defeat in Emerson.

The Trojans, who led at the end of the first half 14-13, and were tied at 21-21 at the end of the third quarter, battled against a full-court man-to-man press for the entire game, and had a successful time of it going into the fourth quarter, according to head Coach Arnold Cerny.

Wakefield's scoring came by way of Darla Hartman with 12 points and Roni Starzl with 10 points. The Trojans shot 9 of 53 for 17 percent from the field and hit 9 of 19 from the free throw line for 47 percent.

Mary Henderson topped Emerson-Hubbard's scoring with 10 points. The Pirates hit 14 of 49 from the field for 28 percent and 16 of 16 from the line for an even 50 percent.

"We were patient on offense in the first three quarters of the game, but in the fourth we started losing that patience and didn't box out well underneath," Cerny said.

On the boards, Wakefield outnumbered the Pirates 36 to 34, with Stacy Kuhl leading the way with nine rebounds, followed by

Tricia Schwardten with eight rebounds and Marci Greve and Roni Starzl with seven boards each.

Shooting and rebounding will continue to be key areas of work for the Trojans, according to Cerny. "We ousted Emerson, but we are missing five and six foot shots from underneath and we need to continue work in that area to improve our shooting percentage," he said.

"With our rebounding, we're still looking at the ball rather than searching out a girl and boxing out for the rebound. We do a good job early and then tire out towards the end of the game," Cerny also pointed out a line-up change, with the start of freshman Tricia Schwardten at point guard and the switch of

Stacy Kuhl to off guard. "Tricia had only two turnovers in her first start at points guard...she ran the offense well and right now looks to be one of our best ball handlers."

Wakefield, 0-4, suits up again tonight (Thursday) for a home game with Hartington High.

Wakefield	6	8	7	6	27
Emerson	4	9	8	15	36

Wakefield	FG	FT	F	TP
Hartman	4	4	5	12
Greve	0	0	3	0
Starzl	3	4	3	10
Kuhl	1	1	3	3
Schwardten	1	0	2	2
Miller	0	0	0	1
Totals	9	9	19	27
Emerson	14	8	16	36

## sports slate

Thursday, Dec. 13  
**HIGH SCHOOL BASKETBALL**  
 Laurel girls host Wayne  
 Wakefield girls host Hartington  
**WRESTLING**  
 Wayne High hosts South Sioux City  
**COLLEGE BASKETBALL**  
 WSC Wildcats/reserves at Concordia  
**RECREATION BASKETBALL**  
 Practice for 7th and 8th grade boys at Wayne City Auditorium

Friday, Dec. 14  
**HIGH SCHOOL BASKETBALL**  
 Allen boys host Newcasille  
 Laurel boys host Osmond  
 Wakefield boys host Hartington  
 Wayne boys host Wisner Pilger  
 Winside boys host Coleridge  
**COLLEGE BASKETBALL**

WSC Lady Cats host Neb'r Wesleyan  
**RECREATION BASKETBALL**  
 Practice for 7th and 8th grade girls at Wayne City Auditorium

Saturday, Dec. 15  
**HIGH SCHOOL BASKETBALL**  
 Allen boys host Hartington  
**WRESTLING**  
 Wayne at South Sioux Invitational  
**RECREATION BASKETBALL**  
 Practice for 3rd and 4th grade boys, 10 a.m. to noon; 5th and 6th grade girls 1 to 2:30 p.m.; 5th grade boys, 2:30 to 3:30 p.m.; 6th grade boys, 3:30 to 4:30 p.m.

Tuesday, Dec. 18  
**HIGH SCHOOL BASKETBALL**  
 Allen girls at Homer  
 Allen boys at Homer  
 Laurel girls host Osmond  
 Wayne girls host Columbus-Lakeview  
 Winside girls at Wynot  
**RECREATION BASKETBALL**  
 Practice for 5th and 6th grade boys and girls at Wayne City Auditorium

Wednesday, Dec. 19  
**RECREATION BASKETBALL**  
 Practice for 7th and 8th grade girls at Wayne City Auditorium

## Snowfox Holiday Classic

# Swim Club places well at meet

A full three days of competition ended with recognition for several members of the Wayne Swim Club at the 17th annual Snowfox Holiday Classic Swim Meet in Sioux Falls, S.D.

A total of 16 club members participated in the meet on Dec. 7-9, which was sponsored by the Sioux Falls Snowfox Swim Club and Coca-Cola.

Clubs entered in the meet included those from Aberdeen, Brookings, Pierre, Sioux Falls, Vermillion and Yankton S.D., Marshall, Minn., Spencer, Iowa, and Wayne.

Results for the Wayne swimmers include:  
 Mindy Burt, 11 and 12 year old girls division — third place, 100 backstroke; fifth place, 50 butterfly.  
 Greg DeNaeyer, 11 and 12 year old boys division — first place, 50 backstroke; third place, 50 breaststroke, 50 freestyle; fifth

place, 100 freestyle, 100 breaststroke; eighth place, 50 butterfly, 100 backstroke.  
 Kris DeNaeyer, 9 and 10 year old girls division — fourth place, 100 backstroke, sixth place, 200 freestyle.  
 Mike DeNaeyer, 11 and 12 year old boys division — second place, 200 freestyle, 100 freestyle, 50 freestyle; fourth place, 50 butterfly, 100 backstroke, 50 backstroke.  
 Susie Enz, 9 and 10 year old girls division — third place, 100 backstroke; seventh place, 50 butterfly.  
 Stephanie Kloster, 9 and 10 year old girls division — seventh place, 100 breaststroke.  
 Kim Kruse, 9 and 10 year old girls division — eighth place, 200 freestyle.  
 Mark Zach, 8 years and under boys division — fifth place, 25 breaststroke, sixth place, 100 individual medley; seventh place, 50 breaststroke; eighth place, 100 freestyle.  
 Mike Zach, 9 and 10 year old boys division — fifth place, 50 freestyle, eighth place, 200 freestyle.

Also participating in the meet was assistant coach Shelly Schroeder, Shawn Schroeder, Shanna Schroeder and Sam Wilson. All participating members received a "Coke Is It" t-shirt.

# Winside wrestlers place fourth in close North Bend competition

The Winside Wildcat wrestling team placed fourth in a close field of competition at the North Bend wrestling invitational held Saturday, Dec. 8.

A total of 20 points separated the top five teams in the eight team field, with host team North Bend and Ashland tying for first place with 118 1/2 points. Winside Pilger ended in third place with 102 1/2 points, edging out the Wildcats, who finished with 102 points.

Winside brought home a pair of weight class champions, along with two second and two third place finishers. Winning at 98 pounds was Mace Kant, who pinned Roger Remmers of David City at 3:22 for the championship.

Also finishing top in his weight class was Jeff Thies at 185 pounds, who decisively Bob Hansen of Ashland 15:8 for the win.

In the 105 pound weight class, Doug Paulsen was pinned by Steve Egg of David City at 1:19 in the final round and ended with a second place medal, as did teammate

Mike Jaeger, who was decisively by Jeff Mandary of Ashland 5:1 in the championship at 155 pounds.

Winners of third place in the consolation round included Chris Olson at 132 pounds with a 5-1 decision of Ed Ballweg of Columbus, and Mike Woerdemann at 167 pounds, who pinned Wayne Nelson of Weeping Water at 2:13 for the win.

"Anytime that you have the top teams finishing so close together in the scoring at an invitational, you know it is a very tough and competitive tournament," said Winside Coach Paul Sok. "It was evenly distributed with each team having about four wrestlers in the finals."

"We had 10 wrestlers competing and seven of those won matches, so I would say we had a pretty successful day. Mace, at 98 pounds and Jeff at 185 pounds each had really outstanding matches and dominated their weight classes."

"Right now we are in a position where we have six or seven good quality wrestlers, and in some of the other classes we have kids that will come along as they get more experience," Sok added.

Darin Schellenberg, at 126 pounds was not able to compete Saturday due to an elbow injury suffered during the dual with Pender, but Sok expects him back in the lineup for this coming weekend.

Winside faces their next tournament action this Saturday, Dec. 15 at Osmond for an eight team invitational.

**NORTH BEND TEAM STANDINGS**

North Bend	118 1/2 points
Ashland	118 1/2 points
Winside Pilger	102 1/2 points
Winside	102 points
David City	98 points
Milford	84 points
Lakeview	47 points
Weeping Water	35 points

## Rules, regs on building ice fishing shanty

Ice fishing season is just around the corner and many fishermen are contemplating building a fishing shanty or some type of protection from the elements to use on their favorite lake.

Actually, about all the ice fisherman needs is a windbreak of some type and anything from a hinged plywood, V shaped structure to an ice tent or an elaborate ice shanty will serve the purpose.

Whatever type of structure you erect, it must be portable and must be removed after each day's fishing if it is used on state owned areas. The only exceptions to that rule are permanent ice shanties that the Commission allows to be erected on selected lakes across the state.

Permanent ice shanties are limited in size by the Commission to being not larger than four feet and six inches in width and eight feet in length. They must have eight-inch wide runners, six inches above the ice and be constructed of floatable materials. They have to have the owner's name painted on the outside in letters at least six inches high.

**WE WILL BE CLOSED**  
 2 P.M. FRI. DEC. 14 & ALL DAY SAT. DEC. 15, 1984  
 IN PREPARATION FOR BECOMING A PART OF  
**NEBRASKA SAVINGS AND LOAN ASSOCIATION FA**  
 with 25 strong offices across the State of Nebraska

WE'RE LOOKING FORWARD TO BRINGING YOU EVEN GREATER SERVICE.



**Midwest Federal**  
 321 Main • 375-2043

### Money Market rates plus safety and liquidity.

Introducing the Cash Reserve Certificate distributed by IDS/American Express.

- No sales charges.
- No withdrawal penalties.
- Attractive rates competitive with money market accounts and funds.
- Low initial investment of \$1,000, \$100 minimum withdrawal.
- Monthly interest checks for \$10,000+ accounts.
- Stability Rates guaranteed each quarter.
- Backed 100% by IDS Certificate Company, a subsidiary of IDS/American Express and the largest issuer of face amount certificates in the US.

Current Rate 10.75%  
 Compounded Effective Yield 11.39%  
 \*Rate shown for quarter ending 12-31-84


For more complete information send for free kit, including a prospectus outlining all fees and expenses. Please read it carefully before you invest or send money. There is no cost or obligation.

Mail coupon today.  
 -Or call 375-1848

Mail to:  
 George Phelps, CPP  
 116 Main Street  
 Wayne, Ne 68787

Yes, I would like more information about your Cash Reserve Certificate.

Name \_\_\_\_\_  
 Address \_\_\_\_\_  
 City \_\_\_\_\_  
 State \_\_\_\_\_ Zip \_\_\_\_\_  
 Phone \_\_\_\_\_



**IDS**  
 Personal Financial Planners  
 © IDS/American Express Inc. 1984

**FOR SALE BY OWNER**  
**7 YEAR OLD HOME IN PILGER**

With central air and double garage. 2 bedrooms, both with washer and dryer hook-up, living room, dining room and kitchen (with garbage disposal) on main floor. Finished basement with 1 bedroom, family room, bath, utility room and storage/fruit room.

**PRICED REASONABLY!**  
 For opt. call 396-3172 before 7 a.m. and after 7 p.m. 371-3660 from 8 to 5. Ask for Norma Jean.

## 10% OFF All Boxed Hallmark Cards

A box of Hallmark cards contains a message of Christmas warmth for you to send thoughtfully to your loved ones and friends.

**Share holiday spirit with beautiful Christmas cards!**

**And Save At**  
**Sab-Mor Pharmacy**  
 1022 Main St. Wayne 375-1444  
**ACROSS FROM THE COLLEGE**

## ARNIE'S FORD-MERCURY OFFERS A FULL LINE OF CARS AND TRUCKS THROUGH FORD CREDIT'S RED CARPET LEASE PLAN FOR QUALIFIED LESSEES.



ESCORT L 2-DOOR



LTD SEDAN



TEMPO GL 2-DOOR



F150 PICKUP



THUNDERBIRD



ECONOLINE SUPER VAN

**CONSIDER LEASING YOUR NEXT CAR OR TRUCK.**

- Leasing is convenient. You only pay for what you use, not the full price of the vehicle.
- There is no used vehicle to dispose of at lease end.
- Leasing frees your cash and you can use your available bank line of credit for other purposes.
- Lessees leasing for business purposes will have the benefit of simplified tax records.

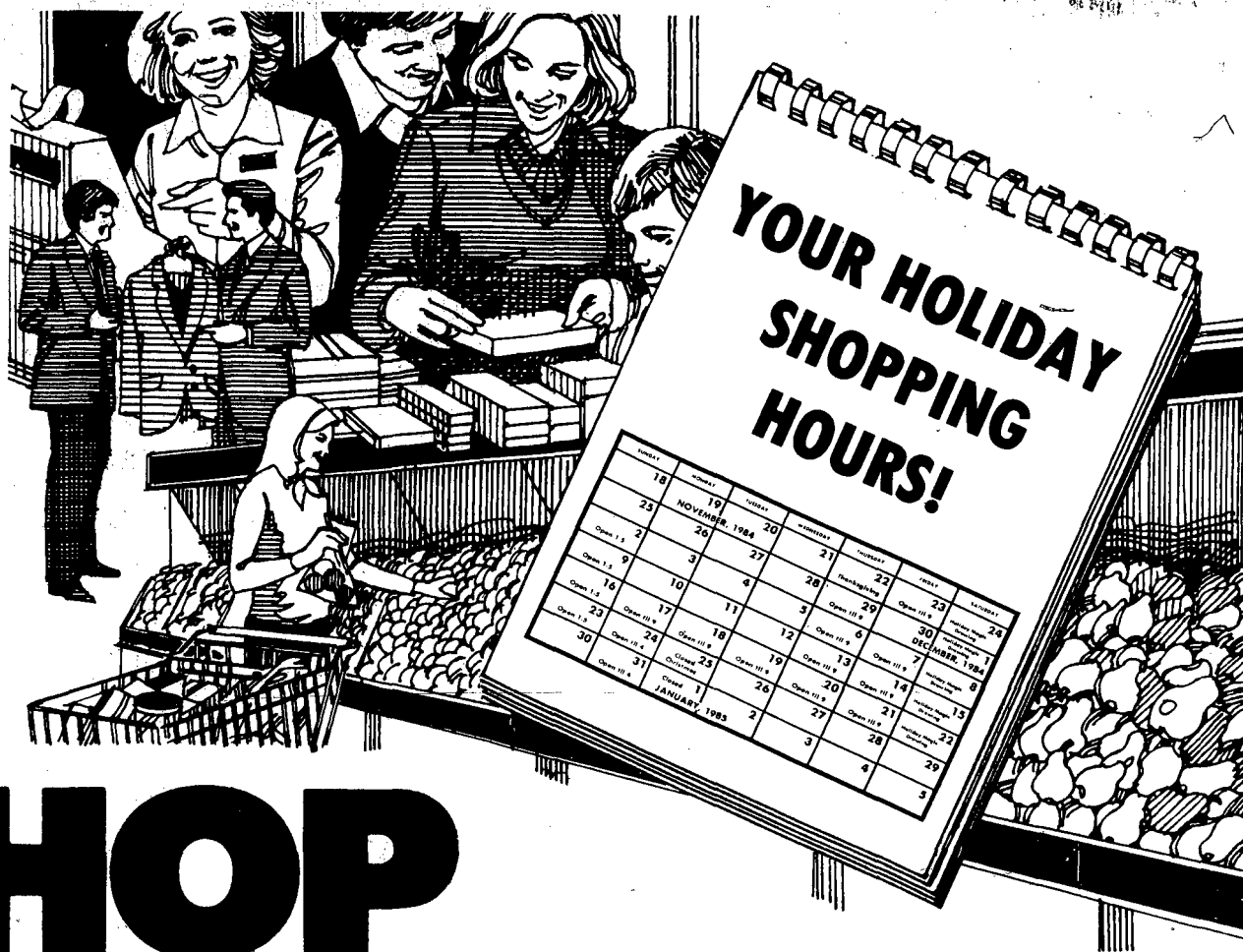
**SEE YOUR FORD DEALER, NOW.**



**Arnie's FORD-MERCURY**  
 119 East Third  
 Wayne, Nebraska  
 375-3780





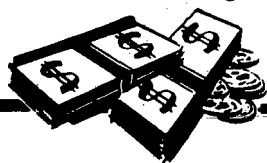


# SHOP LOCALLY!

You'll find  
the best bargains  
in your own backyard

Local merchants need your continuing support so they make it to your advantage to shop locally. No matter what you need, from groceries to clothing, to hardware supplies, you'll find the best buys at the local stores. Good customers keep the merchants in business, and quality service and merchandise keep the customer coming back so it's a bargain for both of you!

When you shop locally, everyone benefits. It's more convenient so you save gas and time. You get friendly, knowledgeable service because local merchants "know" you and appreciate your business. They depend on you to keep their stores going strong. And some of what you spend goes back into the community in the form of taxes and charitable contributions paid by the merchants.



## It Pays to Trade Where You Live

Black Knight  
Red Carr Implement  
Century 21 State-National  
Charlies Refrig. & Appl. Service  
Diamond Center  
Discount Furniture  
Doescher Appliance  
El Toro Package Store & Liquor  
Eldons Standard Service  
Ellingson Motors  
First National Agency  
First National Bank  
Fredrickson Oil Co.  
Godfather's Pizza  
Griess Rexall

Hiscox-Schumacher Funeral Home  
Jensen-Peters Agency, Inc.  
Koplin Auto Supply  
M & S Oil  
Melodee Lanes  
Merchant Oil Co.  
Midwest Federal Savings & Loan  
Morris Machine Shop  
Northeast Nebr. Insurance Agy.  
Pamida Discount Center  
Pat's Beauty Salon  
Mike Perry Chev-Olds  
Ron's Jack & Jill  
Rudy's Pro Shop  
WAYNE COUNTRY CLUB

Sav-Mor Pharmacy  
ACROSS FROM WSC COLLEGE  
Sievers Hatchery  
State National Bank  
Surbers  
CLOTHING FOR MEN & WOMEN  
T&C Electronics  
Wayne Auto Parts  
Wayne Care Centre  
Wayne Co. Public Power Dist.  
Wayne Greenhouse  
Wayne Herald  
Wayne True Value  
Wiltse Mortuary  
WAYNE - WINSIDE - LAUREL

## church services

**CHRISTIAN LIFE ASSEMBLY**  
(James R. Ethwein)  
(Interim pastor)  
Sunday: Christian education hour, 9:45 a.m.; worship, 10:45; evening service, 7:30 p.m.

**EVANGELICAL FREE CHURCH**  
1 mile East of Country Club (Larry Ostercamp, pastor)  
Sunday: Sunday school, 9:45 a.m.; worship, 11; evening service, 7 p.m.  
Wednesday: Bible study, 7:30 p.m.

**FIRST BAPTIST CHURCH**  
(Gordon Granberg, pastor)  
Sunday: Sunday school, 9:30 a.m.; coffee fellowship, 10:30; worship, 10:45.  
Wednesday: Prayer meeting and Bible study, 7 p.m.

**FIRST CHURCH OF CHRIST**  
(Christian)  
1110 East 7th  
(Kenny Cleveland, pastor)  
Sunday: Bible school, 9:30 a.m.; worship, 10:30.  
Wednesday: Bible study, 7:30 p.m.

**FIRST TRINITY LUTHERAN CHURCH**  
Altona  
Missouri Synod  
(Ray Greenleaf, pastor)  
Sunday: Sunday school, nursery through adult, 9:15 a.m.; worship, 10:30.  
Wednesday: Advent worship, Altona, 7:30 p.m.

**FIRST UNITED METHODIST CHURCH**  
(Keith W. Johnson, pastor)  
Saturday: Christmas program rehearsal, 10 a.m.; United Methodist Men, 1 p.m.  
Sunday: Worship, 9:30 a.m.; coffee and fellowship, 10:30; church school, 10:45; Christmas program, 7 p.m.  
Tuesday: Men's prayer breakfast, 6:30 a.m.

Wednesday: Junior and youth choirs, 4 p.m.; bell choir, 6:15; chancel choir, 7.

**GRACE LUTHERAN CHURCH**  
(Jonathan Vogel, pastor)  
(James Pennington)  
(associate pastor)  
Thursday: Grace bowling league, 7 p.m.  
Saturday: Sunday school Christmas practice, 9:30 to 11 a.m.  
Sunday: The Lutheran Hour, broadcast KTCB, 7:30 a.m.; Sunday school and Bible classes, 9; worship, 10; AAL, 11; last Sunday of evening Bible classes, 8 p.m.  
Monday: Gamma Delta devotions, 10:15 p.m.  
Tuesday: Wayne Ministerium, 9 a.m.; Gamma Delta devotions, 10:15 p.m.  
Wednesday: Men's Bible breakfast, 6:30 a.m.; Bible study, 7 p.m.; junior choir, 7; confirmation and midweek school, 7:30; senior choir, 8.

**IMMANUEL LUTHERAN CHURCH**  
Missouri Synod  
(Steven Kramer, pastor)  
Friday: Canvassing committee, 7 p.m.  
Saturday: Confirmation, 10 to 11:30 a.m.; Christmas program practice, 2 p.m.  
Sunday: Sunday school, 9:30 a.m.; worship, 10:30; canvassing committee following service.  
Monday: Ladies Aid worship at Wakefield Health Care Center, 2:30 p.m.; adult Bible class, 7.

**INDEPENDENT FAITH BAPTIST CHURCH**  
208 E. Fourth St.  
(Bernard Maxson, pastor)  
Sunday: Sunday school, 10 a.m.; worship, 11, evening worship, 7:30 p.m.  
Wednesday: Bible study, 7:30 p.m.  
For free bus transportation call 375-3413 or 375-2358.

**REDEEMER LUTHERAN CHURCH**  
(Daniel Monson, pastor)  
Thursday: Men's study group, 6:45 a.m.  
Saturday: Children's Christmas program practice, 9 to 10:15 a.m. Sunday: Early service with children's sermon, 8:30 a.m.; Sunday school and adult forum, 9:45; late service, 11; Children's Christmas program, 7 p.m.  
Tuesday: Ladies Bible Studies, 6:45 and 9:15 a.m.  
Wednesday: Visitation, 1:30 p.m.; seventh and eighth grade confirmation, 6:30 a.m.; worship and music committee, 8.

**ST. ANSELM'S EPISCOPAL CHURCH**  
1006 Main St.  
(James M. Barnett, pastor)  
Sunday: Holy Eucharist, 8:30 p.m.

**JEHOVAH'S WITNESSES**  
Kingdom Hall  
616 Grainland Rd.  
Thursday: Congregational book study, 7:30 p.m.  
Sunday: Bible educational talk, 9:30 a.m.; Watchtower study, 10:20.  
Tuesday: Theocratic school, 7:30 p.m.; service meeting, 8:20.  
For more information call 375-2396.

**ST. PAUL'S LUTHERAN CHURCH**  
(Ted Youngerman)  
Saturday: Christmas program practice, 11:30 a.m.  
Sunday: Church school and adult fellowship, 9:15 a.m.; worship, 10:30; Christmas program, 7:30 p.m.  
Monday: Cub Scouts, 4 p.m.; Boy Scouts, 7; church council, 7:30.  
Tuesday: Cub Scouts, 3:30 p.m.; stewardship meeting, 7:30.  
Wednesday: Eighth grade confirmation, 7 p.m.; wills and trusts seminar with Pastor Nelson, 7:30; ninth grade confirmation, 8; choir practice, 8.

**WAKEFIELD CHRISTIAN CHURCH**  
(interim pastor)  
Sunday: Bible classes for all ages, 9:30 a.m.; worship and junior church, 10:30.  
Tuesday: Women's Bible study, 2:30 p.m.  
Wednesday: Allen area Bible study, 7:30 p.m.; Emerson Pender Thurston area Bible study, 8; Wayne area Bible study, 8.  
For information and/or transportation call Ron Jones, 375-4355.

**WESLEYAN CHURCH**  
(Dixon Main, pastor)  
Sunday: Sunday school, 10 a.m.; worship, 11; evening worship, 7:00.  
Wednesday: Prayer meeting, Bible study CYC and youth meeting, 7:30 p.m.

**ST. MARY'S CATHOLIC CHURCH**  
(Jim Buschelman, pastor)  
Thursday: Mass, 8:30 a.m.  
Friday: Mass, 7 a.m.  
Saturday: Mass, 6 p.m.  
Sunday: Mass, 8 and 10 a.m.  
Monday: Mass, 8:30 a.m.  
Tuesday: Mass, 8:30 a.m.  
Wednesday: Mass, 8:30 a.m.

**THEOPHILUS UNITED CHURCH OF CHRIST**  
(Gail Axen, pastor)  
Sunday: Worship, 9 a.m.

**WAYNE PRESBYTERIAN CHURCH**  
(Robert H. Haas, pastor)  
Sunday: Choir, 8:45 a.m.; worship, 9:45; coffee and fellowship, 10:35; church school, 10:50; share a meal, noon; The Advent Event, 5 to 7 p.m.; session, 7.

**WESLEYAN CHURCH**  
(Dixon Main, pastor)  
Sunday: Sunday school, 10 a.m.; worship, 11; evening worship, 7:00.  
Wednesday: Prayer meeting, Bible study CYC and youth meeting, 7:30 p.m.

# We're Everybody's Santa



We Won't Tell You What You've Heard Before. We'll Show You What You Haven't Seen.

This Thursday and Friday, 8:30 a.m.-9:00 p.m. and Saturday, 8:30 a.m.-5:00 p.m. December 13, 14, 15

Let Us Help Make This Christmas Special!

## The Diamond Center

Invites You To Come In This Thursday, Friday and Saturday, December 13, 14, 15

Scott Francois, manufacturers representative from Fredrick Goldman Co., New York, will display 300 styles of mens rings, 200 styles of engagement rings, and 300 styles of wedding bands. All of these rings will be offered at a savings of 30%. We are offering this savings to introduce you to these new exciting styles.

Mr. Francois will also have a selection of ladies genuine stone rings and pendants (opals, sapphires, rubies, amethyst, etc.)

Save 40% On Anything From This Selection

1 and 2 Carat Diamonds Available at Excellent Prices!

Special Savings On Other Selected Round and Marquise Unmounted Diamonds

All Rings In This Selection Are At 30% Savings

These 5 People Have Had Their Name Entered Into A National Contest, And Have A Chance To Win A 1 Carat Diamond Valued at \$3,500.00  
Genevieve Fredrickson — Wakefield  
Becky Sanford — Wayne  
Verona Henschke — Wakefield  
Jacque Rahn — Allen  
Beverly Brodersen — Coleridge

## Graduate record exam set at WSC

Graduate Record Examinations (GRE) are taken by graduate students during their first nine hours of study. The exams are used for admission purposes and by the graduate office to assist in advising the students as to their potential for graduate study. The GRE tests are given na-

tionally at many locations during each year. This year, Wayne State College (WSC) will offer the GRE in the Nebraska Room located in the lower level of the Student Center. Susan Schroeder, Assistant Dean of Students, will administer the exam beginning at 8:00 a.m. to 12:35 p.m. The fee for this exam is \$29.00.

The third of five exams will be on February 2 with registration deadline on December 27. The GRE measures certain developed verbal, quantitative, and analytical abilities that are important for academic achievement in doing so, the test necessarily reflects the opportunities and efforts that have con-

tributed to the development of those abilities. A general information bulletin containing registration forms and sample tests may be obtained from the Student Services Office located in Hahn or the Graduate Office in Bradenburg Education building.

## College to offer microcomputer courses

Wayne State College (WSC) will offer the following microcomputer courses on the WSC campus.

Both of these classes are designed for business people, secretaries, bookkeepers and in individuals interested in learning how the microcomputer and existing commercial software can

be utilized for small business and personal applications. BUS 196/136 MICROCOMPUTER WORD PROCESSING APPLICATIONS: 1 undergraduate credit hour, Jan. 19 & 26, 8 a.m. Sp.m. Location: WSC Campus, Connell Hall, Room 12. Instructor: Ms. Pat Arneson. This course is designed to pro-

vide introductory word processing instruction to business people and office/secretarial personnel. BUS 196/396 MICROCOMPUTER DATA BASE SPREAD SHEET APPLICATIONS: 1 undergraduate credit hour, February 11, 18, 25, March 4, 11, 6:30 p.m., 9 p.m. Location: WSC Campus, Connell Hall, Room 112. Instructor: Ms. Sharon Garvin.

This is a beginning course in the application and operation of spreadsheet and database microcomputer software. No prior knowledge of microcomputers is required. For further information or to enroll, contact the Extended Campus division at Wayne State College, Wayne, Nebraska 68787, or call (402) 375-2200, ext. 217.

**OUR PLEDGE!**  
If you buy Great Shape Barbie, we'll give you a coupon for \$1.00 off your next purchase.

**Great Shape Barbie**  
Only \$5.99  
Only \$4.99 with coupon

**Stomper Action Track™ Earthhouse**  
Only \$16.97

**Schaper STOMPER II 4 x 4's**  
Only \$72.00  
Only \$39.99 with coupon

**BEN FRANKLIN**  
207-209 Main Street, Wayne, Nebraska

*Cozy and Secure*

**YOUR MONEY IS INSURED FOR UP TO \$100,000**

How many sure things can you bank on today? With us, you can be assured of the fact that your funds are protected by the Federal Deposit Insurance Corporation for up to \$100,000. So when you bank with us, you can bank ON us for complete security.

**JOIN OUR CHRISTMAS CLUB TODAY**

**The State National Bank and Trust Company**  
(Wayne, NB 68787 • 402-375-1130 • Member FDIC)  
Main Bank 122 Main • Drive-In Bank 10th & Main

*The Diamond Center*

211 MAIN  
PHONE 402-375-1804  
WAYNE, NEBRASKA 68787

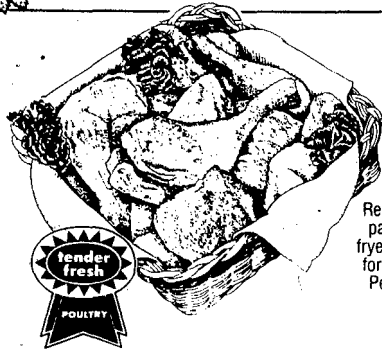


Shop now and save for Your Holiday Table.

Savory Boneless **HAM**  
 2-7 lb. avg. **\$139** lb.

tender fresh Fryers  
**LEGS and THIGHS**  
 lb. **99¢**

tender fresh Fryers  
**CHICKEN BREAST**  
 lb. **\$1.49**



tender fresh Family Pack

**FRYERS**  
**45¢**  
 lb.

Ready for the pan or deep fryer... don't forget oil... Perfect with fries.

Hormel Reg., Beef or Cheese  
**WRANGLERS** 1-lb. pkg. **\$2.09**  
 Farmland Sliced **BACON** 12-oz. pkg. **\$1.35**

Mrs. Paul's Crispy Crunchy **FISH FILLET** 15-oz. **\$2.09**  
 Mrs. Paul's Crispy Crunchy **FISH STICKS** 12-oz. **\$1.89**

**BONELESS ROAST**  
 Rump, Heel or Bottom Round USDA Choice lb. **\$2.19**

**BEEF CUBE STEAK**  
 Boneless USDA Choice lb. **\$2.69**

**PORK CUTLETS**  
 Boneless tender lean Pork lb. **\$1.59**

**BEEF ROUND STEAK**  
 Bone-In USDA Choice lb. **\$2.09**

**SLIM GEM SUMMER**  
 Prairie Maid Sausage Regular or Beef 11-oz. **\$1.69**

**LUNCHEON MEATS**  
 Large Variety Prairie Maid 12-oz. **\$1.19**

**TURKEY NUGGETS or STICKS**  
 Chef's Pantry lb. **\$2.29**

**PARKAY**  
 Kraft Margarine Sticks  
 1-lb. pkg. **29¢**  
 With One Filled Discount Certificate

**EGGS**  
 Pleasmor Grade 'A' Medium  
 dozen **19¢**  
 With One Filled Discount Certificate

**COKE, DIET COKE, 7-UP, DIET 7-UP**  
 6-Pack **\$1.09**  
 With One Filled Discount Certificate

**PIZZAS**  
 Fox Deluxe, 3 Flavors 10-oz. size **19¢**  
 With One Filled Discount Certificate

Assorted **FOOD BASKETS**  
 Made to Order.

**CHEESE TRAYS**  
 For Gifts or Parties.

**FRUIT BASKETS**

For Holiday Giving. All Sizes Made To Order.

**PINEAPPLE**  
 Del Monte, Juice Packed 15-oz. can  
 Slices, Chunks, Crushed, Sliced  
**9¢**  
 Your Choice  
 With One Filled Discount Certificate

**WHITE BREAD**  
 Jack & Jill Sandwich Don't Forget Parkay!  
 24-oz. loaf **9¢**  
 With One Filled Discount Certificate

**FRESH FRUITS & VEGETABLES**  
 Washington Red or Golden **DELICIOUS APPLES**  
 lb. **39¢**

ASK US ABOUT **GIFT CERTIFICATES**  
 A gift of food is always appreciated... available in any amount!

**VALUABLE COUPON** V-00  
 Diamond Shelled **WALNUTS**  
 1-lb. pkg. **60¢ OFF REG. PRICE**  
 Good Only At Jack & Jill through Dec. 18, 1984  
 NF-LN

**VALUABLE COUPON** V-00  
 All Purpose Pillsbury's Best **FLOUR**  
 5-lb. bag **40¢ OFF REG. PRICE**  
 Good Only At Jack & Jill through Dec. 18, 1984  
 NF-LN

**VALUABLE COUPON** V-00  
 Any Bag of Christmas **CANDY**  
 bag **30¢ OFF REG. PRICE**  
 Good Only At Jack & Jill through Dec. 18, 1984  
 NF-LN

**VALUABLE COUPON** V-00  
 Any \$7.50 or More Value **FRUIT BASKET WITH COUPON**  
**\$1.00 OFF REG. PRICE**  
 Good Only At Jack & Jill through Dec. 18, 1984  
 NF-LN

**Merry Christmas**

<b>HAWAIIAN PUNCH</b> Choice of 5 Delicious Flavors 46-oz. <b>89¢</b>	<b>PUDDING CUPS</b> Del Monte 5 Flavors 4-pack <b>\$1.19</b>	<b>PITTED PRUNES</b> Del Monte 24-oz. <b>\$1.99</b>
<b>GOOCH SPAGHETTI</b> Long or Thin 16-oz. <b>69¢</b>	<b>BREAD DOUGH</b> NT Brand 1-lb. loaves pkg. 5 <b>\$1.29</b>	<b>AMERICAN SINGLES</b> Pleasmor Slices 16-oz. <b>\$1.89</b>

Gurley's <b>ALMOND BARK</b> Chocolate, Vanilla, Butterscotch 1 1/2-lb. <b>\$1.89</b>	Dish Liquid <b>IVORY</b> It's Gentle 22-oz. <b>\$1.19</b>
Blue Bunny Half Vanilla <b>ICE CREAM</b> 1/2-gal. <b>\$1.19</b>	Contains Bleach <b>OXYDOL</b> Heavy Duty 84-oz. <b>\$3.29</b>
Nabisco Crackers <b>RITZ</b> Great with Spreads 16-oz. <b>\$1.49</b>	All Temperature <b>CHEER</b> Laundry Powder 84-oz. <b>\$3.29</b>

Spice O' Life <b>CORNING WARE</b> Offer Expires Dec. 31st Low As <b>99¢</b> With Our Bonus Certificates	Choice of Hi-Dri or Bolt <b>PAPER TOWELS</b> Roll <b>89¢</b>
--	---

**FOOD AWARENESS**  
 By Ann Crowley R.D., Ph.D.  
 QUESTION: How can I make my diet healthier?  
 ANSWER: Eat a variety of foods...  
 Send your questions, comments or suggestions to Ann Crowley.

**WE TAKE PRIDE...**  
 in Fair Prices and Honest Values!  
 We care about your business. That's why we try to offer the lowest possible prices along with extra services to give you the most value for your food shopping dollar. It's our pledge to you.  
 YOUR SATISFACTION IS ALWAYS FIRST!

**Santa Claus Will Be Here**  
 Saturdays, Dec. 15, 22  
 from 3-5 p.m.  
**OPEN 24 HOURS A DAY**

These Prices Good Through Dec. 18, 1984  
 YOUR SATISFACTION IS ALWAYS FIRST!  
**RON'S Jack & Jill FOOD CENTER**  
 YOUR STORE FOR SAVINGS IN THE 80'S  
 Wayne, NE

## farm briefs

### Crop year insurance expires

December 10 ends the 1984 crop year insurance for corn, grain sorghum and soybeans grown in Nebraska and insured by the Federal Crop Insurance Corporation (FCIC), or by a private company reinsured by FCIC, according to Leo B. Holthaus, director for the FCIC field operations office.

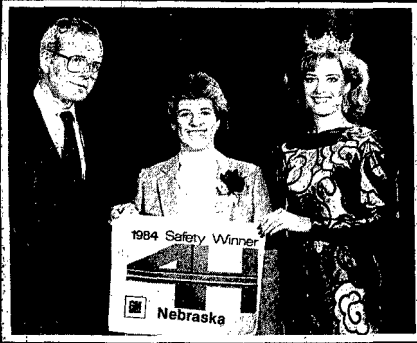
"Any notice of loss must be given no later than 30 days after total destruction of the unit, completion of harvest, or December 10, whichever occurs earlier," according to Mr. Holthaus.

The producer who anticipates a claim should notify his or her crop insurance agent immediately.

"Under the terms of the policy, any acreage on which harvest will not be completed must be left intact until an inspection is made. Any claim for indemnity may be rejected if these loss reporting requirements are not met," Holthaus stated.



SEVERAL MEMBERS of Wayne County Farm Bureau represented their organization at the 66th annual meeting and convention of Nebraska Farm Bureau Federation, held in Kearney, Dec. 2-5. Pictured (from left) are: Charles Wageman, voting delegate; Donald Liedman, a member of the State Nominating Committee; Dorrine Liedman, voting delegate; Madelyn Kai, voting delegate; and Charlie Kai. All members of the Farm Bureau House of Delegates, the voting delegates helped determine Farm Bureau policy on state issues affecting agriculture and made recommendations on national policy issues.



### Adkins gets award

NATIONAL WINNER in the 4-H Safety Program, Sara E. Adkins of Laruel, Nebraska, is congratulated for this honor by General Motors Vice President and Group Executive Elmer W. Johnson and Miss America 1985, Sharlene Wells of Utah. Sara received one of eight \$1,000 scholarships and an expense-paid trip to the 4-H Congress in Chicago from General Motors.



### this and that

Wayne County extension agent  
don c. spitzke

Diagnosing houseplant problems  
When your favorite houseplant decides to wither and fade before your eyes, it's time to look at ways to enrich its life.  
If a plant has elongated, spindly stems with pale or yellow leaves, the problem may be too little light. During the winter when sun is less intense, most plants appreciate some direct sunlight.  
If leaves look bleached or faded, the plant may be receiving too much direct sunlight. This may happen during summer if a plant is in a hot south window receiving intense sun.  
If leaf tips turn brown, check the soil, if dry, water more thoroughly; if moist, salts may be building up. Flush the soil until water runs out the drainage hole. Repeat several times to remove salts. Low humidity also may cause browning of leaf tips.  
WHEN A NUMBER of leaves turn yellow and lower leaves drop, several causes are possible. If the soil is wet, poor drainage and poor aeration may be drowning the plant. Low humidity and high temperatures may cause these symptoms also. Cold or warm drafts often cause leaves to drop. Yellow-green leaves with newer leaves that are small and pale may indicate fertilizer deficiency. Fertilize once a month in summer and every other month during winter according to manufacturers directions.  
Houseplants situated in offices often suffer low light intensity and exposure to drafts. Improper watering of these plants is at least as common a problem as insufficient light.  
The plants used in commercial buildings are usually large, which complicates the watering procedure. At least 10 percent of the water added to the container should drain through the pot. But this requires a large basin and emptying it after watering.  
In most situations, less than adequate water is added to the pot and salts accumulate in the soil. Root injury results and the leaf tips burn.

## Ag producers asked to stand together

Neil Oxton, President of the Nebraska Farmers Union, urged those involved in agriculture to "look to the future and the challenges that lie ahead." Speaking before delegates, members, and guests of the farm organization at its 71st Annual Convention here Monday morning, Oxton said "some 15% of our farmers are preparing to leave agriculture this year. Most of them are unwilling to do so, but they have no other choice." During his President's Address, Oxton pointed out that "in Nebraska, especially, farmers being forced off the land have taken with them several banks and more will follow." The consequences do not end with the farmers leaving their farms, he continued. "Every farming community has the padlocked doors up and down main street. Without

a dramatic reversal, or an unlikely boom in farm prices, Nebraskans will see unbelievable misery and distress next spring when badly-needed operating loans will not be available." "And who can blame the banks?" he asked. "They don't like to call in loans from their friends of a whole lifetime. Small town bankers have been known to call the Farm Crisis Line, too," he remarked, referring to the telephone hotline set up in Nebraska by the Interchurch Ministries in cooperation with other groups. Nebraska Farmers Union was the first to work with the interchurch ministries to establish the hotline, Oxton said, for the basic reason that "families have been destroyed by being forced off their land and into employment elsewhere."

MEDIUM-SIZED FARMERS need protection, Oxton told the convention audience. "The alternative is to allow agriculture to go on as it is creating ever larger farms and ranches until we're all serfs once again, struggling in the life our forefathers fled from when they left Europe a century or two ago." "Let me tell you there is no free enterprise system left in agriculture today," he stated. "Arch-conservatives use the term while they work against the good of the nation for their own personal gain." Oxton said he hopes Treasury Secretary Donald Regan's plan to terminate the investment tax credit and accelerated depreciation is successful. "Then, I wonder, how many investors will be interested in competing with

you cattle and hog producers?" he asked the audience. "We settle for nickels and dimes while the huge money interests are making out like bandits in this matter," Oxton observed. "Get rid of these apparent benefits and you will have less of this unfair competition ruining agriculture as it is today." Oxton said farmers today are better off than their ancestors were. "The problems we have created for ourselves, such as over-investment in all that we have and in agriculture, will be solved in due time." The NEFU leader said he would like to see National Farmers Union "support a tiered system of price supports to protect on any production beyond a mandated level." He charged that the fault of price supports today is

that they "go to those who produce the most and need them the least." IN LOOKING ahead, Oxton said we need to redesign research laboratories to help us farm better, not bigger. We need more research in transportation alternatives," he continued, "producer-controlled marketing methods, and methods to reduce input costs and conserve soil." Oxton also said the problem of soil and water erosion must be addressed by "mandating cross compliance requirements between conservation measures and farm program benefits." "We must direct new energies and new initiatives to open the doors of land ownership to young and beginning farmers," Oxton stressed. "We must continue to stand solidly behind initiative 300

and ban foreign investors and absentee speculators." "If we allow the medium sized farm and ranch to vanish from the American landscape, if we allow our rural communities to wither and die, if we allow starvation to fester like a global cancer," he warned, "we will have lost the soul of the Farmers Union." The Nebraska Farmers Union holds its convention each year to debate and adopt a policy program which serves as the basis for the organization's legislative, cooperative and educational efforts. The 71st Annual Convention began Sunday evening and will conclude around 5:00 tomorrow, Dec. 11. It is being held at the Holiday Inn, 72nd & Grover in Omaha.

## Farm Bureau members attend state convention

Harold George of Dixon, Duane Koester of Allen and Larry Boswell of Allen represented Dixon County Farm Bureau at the Nebraska Farm Bureau Federation annual meeting in Kearney, Dec. 2-5. Other county members participating were Mrs. Duane Koester of Allen and Mr. & Mrs. Edwin Fahrenholz of Allen. Convention delegates voted to support amending Initiative 300 to conform with Farm Bureau philosophy which supports the free enterprise system. Initiative 300 restricts non-family farm corporations from buying Nebraska farmland or ranchland, and has been suggested as a possible cause for the current decline in ag land values. By a narrow vote, delegates defeated a proposal to support repealing Initiative 300 entirely. In other action, delegates reaffirmed Nebraska Farm Bureau's support for using commodity check off funds for the legislated purposes of market development, utilization and research only, as stated in Nebraska law. In new

language added to the organization's policy, Farm Bureau delegates voted to support use of legislative, legal, administrative or other means to stop misuse of mandatory check off funds for such purposes as lobbying or influencing legislation. Gov. Robert Kerrey addressed the convention on Dec. 3, saying that American consumers must be convinced to pay a little more for food, as a means of keeping a viable agriculture. A panel of financial experts told the Farm Bureau members that bankers want to work with farmers and ranchers to help agriculture get back on its feet. If agriculture is not healthy, neither main street businesses or lending is profitable, they said. Nebraska Farm Bureau President Bryce Neidig of Madison was re-elected to a second three-year term during the convention. Eva Volaw of Wellfleet and Art Walker of Scottsbluff were elected to the Farm Bureau board of directors and Ed Fahrenholz of Allen was re-elected to the board.

## the farmer's wife

by pat meyerhenry

By the time we watch Jon's game in Lincoln tonight, we will have seen eight basketball games this week. That's a lot of sitting on bleachers, and we've been at it for seven years now. We have four more to go, by all indications. Basketball is better than football, because supposedly, they aren't lacking you. Besides, it's played in a warm gym, which is why it beats track the last two years. Watching a track meet on a cold, rainy day can be slow torture. I don't pretend to understand how you participate in, one day, like that. After seven years, I've learned a few things. You may as well stay up and wait for the kids and have "coach's corner" after the game instead of all night. That way, you will play the game over only once or twice instead, instead of all night. There's no sense in getting mad at officials. They don't change their minds. You couldn't pay me enough to be one, but it's like farming, someone has to do it. Coaches are an unusual species. There isn't enough money for that job, either. I usually like them okay as individuals, but I'll ever figure out why they do some of the things they do. I'll write a book.

WATCHING A GAME from a parent's viewpoint is very different from that of the other spectators. We went to the Wayne State-Doane game, and I didn't get a stomach-ache at all. Doane's team has a lot of friend's kids from Norfolk playing. In fact, I was working when the kid who plays center was born. But it was just fun watching all those graceful ball-handlers perform. Which is as it should be. Parents sometimes lose sight of this. One friend who coached for years sat with the parents as his son played football this fall. He couldn't believe the comments he heard. Sitting on the bench makes for a long game, for parents and kids. If I were a coach, I'd play everyone, just as reward for all those hours of practice. And I'd play up perclassmen for two reasons: again, a reward, and second, experience. Younger kids need to develop maturity and experience game situations. Obviously, no one would ever hire me as a coach! But I've seen seniors come off the bench and save a game because they could handle the pressure. And I've seen freshmen and sophomores blow it because of the inexperience. I think parents should be very careful not to play out their dreams and goals in their kids. I remember a good little wrestler a few years ago who developed colitis with the pressure to win. (INCIDENTALLY, WRESTLING parents, especially mothers, are something else again. Lois Bowers would change from

the sweet, quiet person I know to an arm-waver yelling "Stick him!" right before my eyes.) I think kids should be encouraged not to quit, no matter how discouraged they are. One of the best commencement addresses I've ever heard was delivered by the school janitor and he titled his talk "Don't Quit." And when a coach tells a kid to quit, as happened to a friend, I get mad. When a team gets a championship, everyone gets a medal. The ones who play have to have someone to practice with. Two years ago, at an honors convocation, I heard a coach praise a senior for sticking it out and giving his all in practice, while getting very little actual playing time. I know Sue's glad she stuck it out one season. They gain from the physical conditioning and the camaraderie of participating. They never know when their moment might come. The Oklahoma player who stopped Jeff Smith on that crucial fourth down was a senior who started only because of injuries to other players. Kay has a poster on her wall which sums it up. Two girls in track uniforms and the quote: "Games are not so much a way to compare our gifts as a way to celebrate them."

## Family Farm in its '11th hour'

"We are moving away, and in fact have moved away from the family farm system already," Dr. William D. Heffernan, Professor of Rural Sociology at the University of Missouri-Columbia told members and guests of the 71st Annual Nebraska Farmers Union Convention held in the Holiday Inn Central this morning. Heffernan described the complex forces that have moved farmers off the land for most of this century and said those forces aren't going to change unless the government adopts a policy aimed at keeping a family farm system of agriculture. In Europe, the sociologist said, "they decided they wanted a very decentralized system with competition left in it." The European Economic Community has a policy that protects smaller sized farms, even though some American farmers believe that protection hurts their own efforts to export more grain. Not all American farms are suffering the same fate in today's malignant agricultural economy, Heffernan said. The smallest "hobby farms" — those under 50 acres in size — are proliferating faster than any other group. And the very largest farms, which can take advantage of federal tax laws that have encouraged expansion, are also farming well. IN THE GREAT PLAINS states, including Nebraska, farms and ranches between 50 acres and 2000 acres in size are disappearing, according to statistics from the U.S. Census of Agriculture in 1978 and 1982. Many of the farmers now going out of business are younger, with an average age in their mid-40's, Heffernan said. "We are in grave danger of losing a generation of some of our best managers as a result of the current crisis," he stressed. As in the 1930's, the 1980's are forcing farmers off the land, but a gradual attrition among farmers has been considered normal. As farmers retire, they have been replaced by fewer younger farmers, he explained.

"What we are seeing today — the farm financial crisis in the Midwest — is really a part of a long term trend in this country. It's been going on for most of this century," Heffernan said. The causes of this decline include federal income tax laws that allow high income Americans to lower their tax obligation by investing in farming. The sociologist described agriculture as "a tax shelter, a good way to launder income." He said added investment in farming can contribute to the oversupply of commodities and lower prices. FARMERS ALSO SUFFER downward pressure on the prices of their products when processing industries become concentrated among a few companies. Heffernan pointed out that "two firms, IBP and Excel — that's Cargill — slaughter 45% of all beef animals." When a company is large enough to control more than 40% of a food product, Heffernan said it simply passes any price cuts it gets from supermarkets down to farmers. "We're not going to have nearly as much competition in the meat industry as some people would lead us to think," he predicted. Other forces hurting farmers include the strong dollar, which makes U.S. grain exports expensive overseas, and high interest rates that quickly erode profits in an industry with average returns of only 5 to 7 percent in the best years, he said. Heffernan questioned whether the trend toward larger operations is desirable from all points of view. Farmers are often praised for their efficiency by pointing out that one farmer feeds about 70 people, he said, but that statistic ignores the people who built the farmer's tractor and made the chemicals he used. At the federal level, when the 1985 farm bill is debated, more than price supports should be discussed, Heffernan told the convention audience. "We should be talking about what kind of farming system we want."

## Nebraskans address Natural Resource problems

Over 3.3 million tons of soil and 17,000 acre feet of water were saved by 6,000 landowners in a one year period ending September 31, through the United States Department of Agriculture's critical erosion and water conservation targeting programs, reports Nebraska's Soil Conservation Service State Conservationist, Sherman Lewis. Nebraska has 47 counties "targeted" for soil erosion problems in the eastern and central part of the state (including Wayne, Dixon and Cedar counties), and another 12 counties are "targeted" for water conservation in the Upper Republican, Central Platte, Little Blue and Upper Big Blue Natural Resources Districts. "The conservation benefits would have been even greater if it had not been for the heavy rains in the fall of 1983 and again in the spring of 1984. In addition many of the PIK acres were unavailable for conservation work after they were converted back to crops." LEWIS ADDED that the somewhat low number of acres protected, compared to the tons of soil erosion prevented, points out that targeting efforts are being directed to the most severely eroding areas. Citing SCS observations, Lewis estimates that continuous erosion rates greater than 5 tons per acre per year calculates to a potential future loss of five bushels of annual production capacity per acre. "Even in times of depressed

Local interest in the targeting programs was outstanding as proven by the good attendance at conservation demonstrations and the willing assistance offered by the news media, Lewis added. For 1985, Box Butte County and the "Mirage Flats" area of Sheridan County are being added to the water conservation targeting and critical erosion targeting is being added to Antelope County. Lewis sees the development of a model watershed program southwest of Pender, Ne., along Logan Creek. He also sees establishing 20 irrigation efficiency demonstration plots with the Central Platte NRD and the Extension Service as the planning highlights of the 1985 targeting program. "With the continued cooperation from landowners, NRD's, and other USDA agencies, we are confident that targeting efforts in 1985 will surpass the substantial accomplishments of 1984," Lewis said. Citing SCS observations, Lewis estimates that continuous erosion rates greater than 5 tons per acre per year calculates to a potential future loss of five bushels of annual production capacity per acre. "Economic losses also occur when irrigation water is wasted. Through the targeting program, 50 irrigation water reuse pits were constructed and efficiency evaluations were conducted on 27 gravity irrigation systems, 62 center pivot systems and 47 pumping plants. These efforts contributed to the 17,000 acre feet of water conserved that benefited over 36,000 acres."

# hoskins news

**LADIES AID-LWML**  
 Forty-six attended the Christmas dinner meeting of the Ladies Aid-LWML at Zion Lutheran Church beginning at noon on Thursday.

Mrs. Guy Anderson and Mrs. Herman Koepke, hostesses, were in charge of the dinner arrangements, decorations and gift exchange. The Youth Group provided a portion of the decorating.

Greeters were Mrs. Mel Freeman and Mrs. Darrell Kruger. Gift placement was handled by Mrs. Galen Anderson and Mrs. Leland Thayer.

At the registration tables were Mrs. Orville Luebe and Mrs. Ralph Kruger, with Mrs. Elmer Laubach in charge of seating the guests.

Visiting committees prior to the meal were Mrs. Larry Koepke, Mrs. Lester Koepke, Mrs. Earl Anderson, Mrs. Ernst Eckman, Mrs. Lloyd Jonson and Mrs. Fred Bargaft.

Mrs. Ralph Saegebarth ushered guests to the basement for dinner, assisted by Mrs. Ralph Kruger.

Mrs. Don Walker, immediate past president, welcomed the group and Pastor Michael Klatt added special greetings and led in prayer for the occasion.

LaVerda Kruger, Leona Weich, Elizabeth Utecht and Irene Wragge were honored with the birthday song and were seated at the special birthday table.

Home baked items, provided by aid members, were sold with Mrs. Lester Koepke, Mrs. Alvin Jonson and Mrs. Clemens Weich in charge.

Mrs. LeRoy Koepke and Mrs. Gerald Kruger assisted at the Sunday school's Christmas card and Youth Group's note card table.

Mrs. James Robinson, president, added a second welcome in behalf of the Ladies Aid-LWML and presided at the business meeting, which was opened with the reading of "If Christmas Be Kept a Splendid Thing."

Members responded to roll call by paying three cents to the Penny Pot. If they were having Christmas dinner guests and five cents if not.

Members expressed appreciation for the excellent work done by Mr. and Mrs. Venis Weich, Mr. and Mrs. Clemens Weich and Elton Weich on the kitchen counter top replacement.

The Altar Guild for December is Mrs. Guy Anderson and for January Mrs. Elaine Ehlers and Mrs. Gladys Koepke are in charge.

On the December flower committee are Mrs. Elaine Ehlers and Mrs. Mel Freeman.

A playlet entitled, "That Night in Bethlehem," directed by Mrs. Robinson, was presented by Mrs. Marie Rathman, Mrs. Guy Anderson, Mrs. Duane Kruger and Pastor Klatt, who were dressed respectively as Biblical

personalities Joseph, Benjamin, the Bethlehem inn keeper and sandal maker; Anna, the inn keeper's wife; and Jonathan, the inn keeper's son, who was a cloth buyer.

The audience sang appropriate Christmas hymns at various times during the program with Mrs. Leon Weich, accompanist. Nutshell friends were revealed with the distribution of gifts to members. Guests also exchanged gifts.

A gift show and tell was held prior to closing with a Christmas song and Christmas prayer.

The next meeting will be on Jan. 3 when hostesses will be Mrs. Lester Koepke and Mrs. James Robinson.

**TRINITY LUTHERAN LADIES AID**  
 Mrs. Doug Deck, Margaret Krause and the children, as teachers of Trinity Lutheran School were guests when the Trinity Lutheran Aid met for a no-host 12:15 Christmas dinner Thursday. The meeting opened with a hymn and Pastor Bruce conducted devotions.

Mrs. Lane Marolz presided at the business meeting. Mrs. Myron Deck read the report of last month's meeting and Mrs. Dan Bruggeman gave the treasurer's report. Correspondence was read and committee reports given.

The visiting committee for December is Mrs. Lane Marolz and Mrs. Alfred Mangels. Mrs. Leonard Marlen will be in charge of sending church visitor notes.

New yearbooks were distributed and reviewed.

Monetary gifts were given to the church, custodian, the teachers, the African Medical Mission and the Lutheran High School at Waco.

The school children presented a short musical program. Committee #2 was in charge of entertainment and presented a program. Taking part were Mrs. Dan Bruggeman, Mrs. Myron Deck, Mrs. Lyle Marolz, Mrs. Art Behmer, Mrs. Mary Kollath and Mrs. Alvin Wagner. Mrs. Gerald Bruggeman and Mrs. Myron Deck read the report of last month's meeting and Mrs. Dan Bruggeman gave the treasurer's report.

Monetary gifts were sent to Kamp Kaleo, the Nebraska Boys Ranch at Alliance, the Nebraska Children's Home in Omaha and the Kidney Foundation at Norfolk.

Christmas cards were sent to the church of the congregation.

Mrs. Lee Anderson and Mrs. Anna Falk were honored with the birthday song.

Christine Lueker was in charge of the program on Advent. Scripture readings were given by Mrs. George Langenberg Sr., Mrs. Erwin Ulrich, Mrs. Alfred Vinson, Mrs. Rose Puls, Mrs. Carl Wiltner, Mrs. Raymond Walker and Pastor David. Others taking part were Mrs. Henry Langenberg,

Mrs. Lee Anderson, Gladys Reichert and Mrs. Norris Langenberg.

Christmas carols were sung accompanied by Mrs. Andrew Andersen.

A gift exchange was held at the close of the afternoon.

The next meeting will be on Jan. 3 when election of officers will be held and Mrs. Rose Puls will be the hostess.

**CHRISTMAS PROGRAM**  
 A capacity crowd attended the Hoskins Public School annual Christmas program Friday evening beginning at 7:30 p.m.

A play entitled, "Super Gift from Heaven" was presented under the direction of Lanette Stoffel with the entire school taking part. Setting for the play was "Ye Olde Toy and Gift Shoppe."

Mrs. Charles Maas was music director and presented a prelude of Christmas songs, as well as accompanying the songs in the play.

Santa Claus arrived following the program with treats for the children.

Bars, cookies, coffee and punch were served at the close of the evening, with the Concerned Parents Organization in charge.

**BAKE SALE**  
 A community bake sale and drawing was held at the Hoskins fire hall from 9 a.m. to 2 p.m. on Saturday with proceeds going to the Mandy Schulte fund. Prize winners were Mrs. Roger Langenberg of Winside, a Christmas wreath; Mrs. Willard Kleinsang of Hoskins, a turkey; and Mrs. Gary Ehrenfried of Norfolk, a roasting hen.

**G&G CARD CLUB**  
 The G&G Card Club held their annual no-host chili supper at the home of Mr. and Mrs. Erwin Ulrich Friday evening.

The evening was spent playing 10 point pitch with prizes going to Mr. and Mrs. Alfred Carstens, Mrs. Frieda Meierhenry and Mrs. Carl Hinzman.

The next regular meeting will be with Mrs. Rose Puls on Jan. 4.

**CIRCLE PINOCCHLE**  
 Mr. and Mrs. Walter Koehler entertained the Circle Pinocchle Club Thursday evening. Card prizes were won by Mr. and Mrs. Art Behmer, Mr. and Mrs. Carl Hinzman, Mr. and Mrs. Lyle Marolz and Mr. and Mrs. Erwin Ulrich.

Mr. and Mrs. Lyle Marolz will host the next meeting. The date will be announced later.

**500 CARD CLUB**  
 Mr. and Mrs. Eric Meierhenry entertained the 500 Card Club Dec. 3. Mr. and Mrs. Emil Gutzman were guests.

Card prizes went to Lyle Marolz, Mrs. Art Behmer, Mr. and Mrs. Oliver Kiesau and the guests.

Mr. and Mrs. Albert Behmer will host the next meeting on Jan. 7.

**Peace United Church of Christ (John David, pastor)**  
 Saturday, Dec. 15: Sunday school Christmas program practice, 1:30-4 p.m.

Sunday, Dec. 16: Sunday school, 9:30 a.m.; worship service, 10:30 a.m.; guest speaker Dr. David Jamison of Lincoln; congregational potluck dinner following services.

Wednesday, Dec. 19: Junior choir practice, 7:30 p.m.; senior choir practice, 8 p.m.; confirmation class, 8 p.m.

**Zion Lutheran Church (Michael Klatt, pastor)**  
 Saturday, Dec. 15: Catechetical instruction, 9:11 a.m.; Dual Parish Youth meet to decorate Christmas tree, 2 p.m.

Sunday, Dec. 16: Worship service, 8:45 a.m.; Sunday school, 10 a.m.; AAL Branch meeting following services; Sunday school Christmas program practice, 3 p.m.; Dual Parish Youth Christmas party, 1:30 p.m.

Monday, Dec. 17: Congregational Christmas caroling, 6:30 p.m.

Wednesday, Dec. 19: Catechetical instruction, 3:30 p.m.

**SOCIAL CALENDAR**  
 Thursday, Dec. 13: Highland Woman's Home Extension Club no-host Christmas dinner. Mrs. Ron Lange; Hoskins Card Club, Mrs. Katherine Malchow.

Monday, Dec. 17: Town and Country Garden Club. Mrs. E.C. Fenske.

Wednesday, Dec. 19: Santa Claus visits Hoskins fire hall, 3:45 p.m.

Mr. and Mrs. Bill Fenske returned home Nov. 29—from Klemme, Iowa where they had spent several days visiting in the Rev. and Mrs. Julius Reichter-mann home. The women are sisters.

Michelle Reiser and Cassid Hull of O'Neill were Friday overnight guests of Mr. and Mrs. Robert Hoff. The women are sisters.

George Wiltner returned home Saturday from the Lutheran Community Hospital in Norfolk where he had been a patient the past week.

Mr. and Mrs. Marvin Wiltner returned to their home at Enid, Okla. Sunday after spending since Friday visiting the George Wiltners and other area relatives.

**DORCAS SOCIETY**  
 The Dorcas Society of the Peace United Church of Christ met for their annual no-host Christmas dinner Thursday as 12:30.

Guests were Mrs. George Wiltner, Mrs. Bill Fenske, Mrs. Frieda Meierhenry, Mrs. Edna Harlwig, Mrs. Anna Falk, Mrs. LaVern Walker, Mrs. Vernon Behmer, Mrs. Edna Puls and Mrs. Larry Bruidgen.

Mrs. Andrew Andersen, president, welcomed the guests and Pastor David opened the meeting with prayer. Roll call was a scripture verse.

Mrs. Norris Langenberg reported on the previous meeting and Mrs. Mark Walker gave the treasurer's report.

Monetary gifts were sent to Kamp Kaleo, the Nebraska Boys Ranch at Alliance, the Nebraska Children's Home in Omaha and the Kidney Foundation at Norfolk.

Christmas cards were sent to the church of the congregation.

Mrs. Lee Anderson and Mrs. Anna Falk were honored with the birthday song.

Christine Lueker was in charge of the program on Advent. Scripture readings were given by Mrs. George Langenberg Sr., Mrs. Erwin Ulrich, Mrs. Alfred Vinson, Mrs. Rose Puls, Mrs. Carl Wiltner, Mrs. Raymond Walker and Pastor David. Others taking part were Mrs. Henry Langenberg,

**TRINITY LUTHERAN LADIES AID**  
 Mrs. Doug Deck, Margaret Krause and the children, as teachers of Trinity Lutheran School were guests when the Trinity Lutheran Aid met for a no-host 12:15 Christmas dinner Thursday. The meeting opened with a hymn and Pastor Bruce conducted devotions.

Mrs. Lane Marolz presided at the business meeting. Mrs. Myron Deck read the report of last month's meeting and Mrs. Dan Bruggeman gave the treasurer's report. Correspondence was read and committee reports given.

The visiting committee for December is Mrs. Lane Marolz and Mrs. Alfred Mangels. Mrs. Leonard Marlen will be in charge of sending church visitor notes.

New yearbooks were distributed and reviewed.

Monetary gifts were given to the church, custodian, the teachers, the African Medical Mission and the Lutheran High School at Waco.

The school children presented a short musical program. Committee #2 was in charge of entertainment and presented a program. Taking part were Mrs. Dan Bruggeman, Mrs. Myron Deck, Mrs. Lyle Marolz, Mrs. Art Behmer, Mrs. Mary Kollath and Mrs. Alvin Wagner. Mrs. Gerald Bruggeman and Mrs. Myron Deck read the report of last month's meeting and Mrs. Dan Bruggeman gave the treasurer's report.

Monetary gifts were sent to Kamp Kaleo, the Nebraska Boys Ranch at Alliance, the Nebraska Children's Home in Omaha and the Kidney Foundation at Norfolk.

Christmas cards were sent to the church of the congregation.

Mrs. Lee Anderson and Mrs. Anna Falk were honored with the birthday song.

Christine Lueker was in charge of the program on Advent. Scripture readings were given by Mrs. George Langenberg Sr., Mrs. Erwin Ulrich, Mrs. Alfred Vinson, Mrs. Rose Puls, Mrs. Carl Wiltner, Mrs. Raymond Walker and Pastor David. Others taking part were Mrs. Henry Langenberg,

**BAKE SALE**  
 A community bake sale and drawing was held at the Hoskins fire hall from 9 a.m. to 2 p.m. on Saturday with proceeds going to the Mandy Schulte fund. Prize winners were Mrs. Roger Langenberg of Winside, a Christmas wreath; Mrs. Willard Kleinsang of Hoskins, a turkey; and Mrs. Gary Ehrenfried of Norfolk, a roasting hen.

**G&G CARD CLUB**  
 The G&G Card Club held their annual no-host chili supper at the home of Mr. and Mrs. Erwin Ulrich Friday evening.

The evening was spent playing 10 point pitch with prizes going to Mr. and Mrs. Alfred Carstens, Mrs. Frieda Meierhenry and Mrs. Carl Hinzman.

The next regular meeting will be with Mrs. Rose Puls on Jan. 4.

**CIRCLE PINOCCHLE**  
 Mr. and Mrs. Walter Koehler entertained the Circle Pinocchle Club Thursday evening. Card prizes were won by Mr. and Mrs. Art Behmer, Mr. and Mrs. Carl Hinzman, Mr. and Mrs. Lyle Marolz and Mr. and Mrs. Erwin Ulrich.

Mr. and Mrs. Lyle Marolz will host the next meeting. The date will be announced later.

**500 CARD CLUB**  
 Mr. and Mrs. Eric Meierhenry entertained the 500 Card Club Dec. 3. Mr. and Mrs. Emil Gutzman were guests.

Card prizes went to Lyle Marolz, Mrs. Art Behmer, Mr. and Mrs. Oliver Kiesau and the guests.

Mr. and Mrs. Albert Behmer will host the next meeting on Jan. 7.

**Peace United Church of Christ (John David, pastor)**  
 Saturday, Dec. 15: Sunday school Christmas program practice, 1:30-4 p.m.

Sunday, Dec. 16: Sunday school, 9:30 a.m.; worship service, 10:30 a.m.; guest speaker Dr. David Jamison of Lincoln; congregational potluck dinner following services.

Wednesday, Dec. 19: Junior choir practice, 7:30 p.m.; senior choir practice, 8 p.m.; confirmation class, 8 p.m.

**Zion Lutheran Church (Michael Klatt, pastor)**  
 Saturday, Dec. 15: Catechetical instruction, 9:11 a.m.; Dual Parish Youth meet to decorate Christmas tree, 2 p.m.

Sunday, Dec. 16: Worship service, 8:45 a.m.; Sunday school, 10 a.m.; AAL Branch meeting following services; Sunday school Christmas program practice, 3 p.m.; Dual Parish Youth Christmas party, 1:30 p.m.

Monday, Dec. 17: Congregational Christmas caroling, 6:30 p.m.

Wednesday, Dec. 19: Catechetical instruction, 3:30 p.m.

**SOCIAL CALENDAR**  
 Thursday, Dec. 13: Highland Woman's Home Extension Club no-host Christmas dinner. Mrs. Ron Lange; Hoskins Card Club, Mrs. Katherine Malchow.

Monday, Dec. 17: Town and Country Garden Club. Mrs. E.C. Fenske.

Wednesday, Dec. 19: Santa Claus visits Hoskins fire hall, 3:45 p.m.

Mr. and Mrs. Bill Fenske returned home Nov. 29—from Klemme, Iowa where they had spent several days visiting in the Rev. and Mrs. Julius Reichter-mann home. The women are sisters.

Michelle Reiser and Cassid Hull of O'Neill were Friday overnight guests of Mr. and Mrs. Robert Hoff. The women are sisters.

George Wiltner returned home Saturday from the Lutheran Community Hospital in Norfolk where he had been a patient the past week.

Mr. and Mrs. Marvin Wiltner returned to their home at Enid, Okla. Sunday after spending since Friday visiting the George Wiltners and other area relatives.

# THE JOHN DEERE CHRISTMAS STORE

When you think holiday gifts, think John Deere

**Barbecue Grills**  
 John Deere Grills are available in gas and charcoal models. All feature quality construction for less maintenance. See us for grill accessories, too.

**Beautiful Bodyguards Clothing**

**Jewelry**  
 • Belt Buckles  
 • Key Chains  
 • Pen & Pencil Sets  
 • Money Clips

**PRE-CHRISTMAS TOY SALE**  
 FOR KIDS OF ALL AGES  
 15% OFF until Christmas

**NEW THIS YEAR**

Model	Reg.	Sale
539DO Model "A" w/Rubber Tire	\$10.00	\$8.50
510EO Forage Wagon	\$10.00	\$8.50
509EO Forage Harvester w/Interchangeable Heads	\$10.00	\$8.50
522EO Bale Throw Wagon	\$8.00	\$6.50
528 EO AM/FM Radio w/Headset	\$14.27	\$12.12
531EO JD Truck Bank	\$8.57	\$7.28
584DO MFWD Tractor	\$18.97	\$16.77
550E 4 WD Tractor	\$27.50	\$23.37
541DO Row Crop Tractor	\$15.71	\$13.56
536 Titan Combine with Interchangeable Heads	\$27.14	\$23.06
520 Riding Tractor Cycle	\$97.00	\$82.45
592DO Round Baler	\$13.57	\$11.53
595 Corn Planter	\$15.14	\$12.86

**Logan Valley Implement**  
 Phone 375-3325 Wayne, NE

# "FREE CAR REPAIRS??"

Not exactly, but it's the next best thing. It's our free Lifetime Service Guarantee and it means you'll never have to pay twice for the same repair. Here's how it works. If your Ford, Lincoln, Mercury or Ford Light Truck ever needs to be fixed, you pay once and we'll guarantee that if the covered part ever has to be repaired again, we'll fix it free. Free parts. Free labor. Our Lifetime Service Guarantee lasts as long as you own your vehicle, no matter where or when you bought it. It covers thousands of parts. And nobody else has a repair guarantee this good—or one that even comes close. So if your vehicle needs repair, bring it to us and get our free Lifetime Service Guarantee. It's the next best thing to free car repairs.

This limited warranty covers vehicles in normal use. And excludes routine maintenance parts, belts, hoses, sheet metal and upholstery.

**We fix cars for keeps.**

**LIFETIME SERVICE GUARANTEE**

**Arnie's FORD-MERCURY**

119 East Third  
 Wayne, Nebraska  
 375-3780

# NEWS

**SENIOR CITIZENS**  
The Senior Citizens Center held a birthday party Nov. 30 for Alice Krause, Irene Armour and Wilmer Arderson. They were given corsages of snowmen made by director Joanne Rahn. Hostesses for the birthday party were Inez Jackson, Pearl Snyder and Loyola Carpenter.

The Senior Center Board met Dec. 4 at 7:30 p.m. with eight members present including director Joanne Rahn. The board voted to have the January birthdays celebrated Jan. 4 so that the parties would be before or during, instead of after their birthdate. This will continue through the year on the last Friday of each month.

At an energy meeting, it was concluded there was a need for a mini bus for transportation for members and others for doctor appointments and other things. It would be used for the county and designated to go at regular times. A committee is checking into this.

Some dates to remember are cake party, Dec. 13; breakfast, Dec. 10; Farmers Cafe; and next board meeting, Jan. 7.

**LEGION AND AUXILIARY**  
The Allen American Legion Auxiliary met Sunday evening for their annual family Christmas party. The potluck

supper was well attended. Marcia Raslede had charge of the program which followed. The group sang Christmas carols accompanied by Sandy Olesen. There will be no meeting during the month of December. The next meeting is the second Monday in January.

**LIBRARY BOARD**  
Springbank Township Library Board had a new board member, Edna Ellis. Mrs. Ellis will replace Norma Warner who has resigned. Also it was reported the library has a set of older encyclopedias to be given away. The library does not have room for this set and anyone interested in receiving them can leave their name with Bonnie Kellogg, the librarian.

**MUSIC BOOSTERS**  
The Music Boosters are busy with their project which will assist the band members to go to their Rapid City, S.D., trip next year. They are collecting papers and aluminum cans. They will make their next collection on Saturday, Dec. 29. If you have these items and wish them collected have them ready at the door or contact Sandy Olesen or Carol Chase. The group is also having drawings of the home basketball games of crafts and baked items.

**FHA NEWS**  
At the December meeting of the Allen FHA Chapter, guest speaker was Cheri Stevens from Randolph. Cheri is District Five

FHA State Officer. Kristi Chase, treasurer, reported that \$110 was collected for the American Diabetes Association. The next meeting will be held Dec. 17 with a Christmas cookie, candy and gift exchange. LeAnn McDonald, reporter.

**FRUIT IN**  
The FFA fruit has arrived and will be distributed this week.

**FREE THROW CONTEST**  
A free throw contest is being held this year at the basketball games. Two names are drawn and they have the option of throwing from mid-court or at the key. Home names drawn can receive a school jacket at the half court or a sweater at the key. Out of town names will receive \$15 for half court or \$10 at the key. So far, two winners, Larry Boswell and Amy Noe, each have received sweaters.

**First Lutheran Church**  
(Rev. David Newman)  
Sunday, Dec. 16: Congregation meeting before service; worship.

9 a.m.; Sunday school, 10 a.m.; Christmas program practice, 10-12; Christmas program, 7 p.m.  
Wednesday, Dec. 19: Confirmation, 4 p.m.

**Springbank Friends Church**  
(Roger Green, supply pastor)  
Sunday, Dec. 16: Sunday school, 9:30 a.m.; worship, 10:30 a.m.; a candidate will be preaching the morning sermon; fellowship dinner to follow.  
Wednesday, Dec. 19: Cottage prayer meeting and Bible study each Wednesday, 7:30 p.m., place to be announced.

**United Methodist Church**  
(Rev. Anderson Kwankin)  
Saturday, Dec. 15: Sunday school Christmas program practice, 1:30 p.m.

Sunday, Dec. 16: Sunday school, 9:30 a.m.; Christmas program, 10:30 a.m.; potluck fellowship dinner following the program.  
Wednesday, Dec. 19: Joy Circle Christmas fellowship, 7:30 p.m.

Donna Wood, a cookie exchange will be held.

**COMMUNITY CALENDAR**  
Thursday, Dec. 13: Bid and Bye Club Christmas luncheon, 12:30.  
Marie Hansen home, Sandhill Club, 2 p.m., Anna Carr, \$2 gift exchange; Senior Citizens card party, 7:30 p.m., gift exchange.  
Friday, Dec. 14: Allen Community Extension Club Christmas luncheon, 12:30; Rachel McCaw at Wakefield.  
Monday, Dec. 17: Pleasant Hour Club luncheon, 12:30; Sandy Pettit; Allen Community Development Club.  
Wednesday, Dec. 19: Knitting Club luncheon, Joyce Schroeder.  
Thursday, Dec. 20: Gasser Post VFW, 8 p.m., Martinsburg fire hall; Gasser Post VFW Auxiliary, 8 p.m., Martinsburg School, Judy Vavra hostess.

**SCHOOL CALENDAR**  
Thursday, Dec. 13: K-12 Christmas concert, 7 p.m.  
Friday, Dec. 14: Boys basketball with Newcastle, 6:30 p.m.; pep band will play.  
Saturday, Dec. 15: Boys basketball with Hartington, 6:30 p.m.  
Tuesday, Dec. 18: Girls and boys basketball game at Homer, 6:30 p.m.  
Thursday, Dec. 20: District livestock judging at Lincoln; boys basketball at Wakefield, 6:30 p.m.  
Friday, Dec. 21: Christmas dismissal, 1:30 p.m., for Christmas vacation.

Mr. and Mrs. Bill Kjer of Alliance were visitors this past week of friends and relatives in the area.

## winside news

helen hancock 286-4265

**LADIES AID**  
St. Paul's Lutheran Aid hosted a luncheon Dec. 5 with 31 members and 19 guests present. Mrs. Byron Janke, president, called the meeting to order. The secretary and treasurer reports were approved as read.

A thank you note was read from Mrs. Pat Meierhenry thanking the Aid for the gift certificate she received for speaking.

The Christmas bazaar report was given. Mrs. Bev Hansen and Mrs. Bev Voss thanked the ladies for all their help in making the bazaar a success.

Those interested in puffing poinsettias on the altar should contact Mrs. Bev Voss or Lori Jaeger.

Snack bar workers for Jan. 11 are Julie Kanf and Doris Marolt; the workers for Jan. 15 are Mary Langenberg and Mary Fredrich. Mrs. Herb Jaeger led the devotions. The group sang, "Come Now Long Expected Jesus" and "Joy to the World."

The next meeting will be Jan. 2 with 12:30 luncheon. Members will vote for a new president and treasurer at this time.

**LIBRARY BOARD**  
The Winside Public Library Board met Dec. 5 at the library.

A film, "Cosmic Christmas" will be shown to youngsters at the auditorium on Dec. 22 at 1:30 p.m. Santa Claus will be present following the film to hand out treats.

The board is sponsoring a drawing to be held Dec. 22.

Ted Olson donated 34 books to the library; Craig Tillemo, three paperback books; Yleen Cowan, seven best sellers; Delores Gable, five craft books; and JoAnn Field, one book.

"Who's Who Among High School Students" was received by the library.

**FINE ARTS BOOSTERS**  
The Fine Arts Boosters met Dec. 3 at the band room. Bars will be sold following the grade school musical on Dec. 17. Twenty families will be solicited to donate bars.

It was reported that the homemade ice cream and pie social following the high school musical play, "Little Orphan Angela" was a success.

The next meeting will be held Jan. 7 at 7 p.m. at the band room. All parents of students involved in band, chorus are invited to attend.

**CENTER CIRCLE CLUB**  
The Center Circle held their Christmas party at Wilf's Cafe Thursday. Fourteen members were present for the turkey dinner.

Christmas cards were signed for Lenore Davis and Jo Thompson.

Blind pitch was played for entertainment. Elsie Janke received high; Darlene Eckert, second high; and Helen Holtgrew, low.

The birthday song was sung for the December birthdays of Helen Holtgrew, Elsie Janke and Irene Meyer.

A grab bag was held for the gift exchange. The next meeting will be Jan. 17 at 1:30 p.m. in the home of Darlene Eckert.

**GIRL SCOUTS**  
Girl Scout Troop 179 met Thursday at their leader Peg Ecker's home for their Christmas party. Games were played followed by a gift exchange.

Lunch was served by the hostess, Peg Ecker. The next meeting will be held Dec. 13. Holly Holdorf will serve refreshments.

St. Paul's Lutheran Church (Rev. William Billow)  
Thursday, Dec. 13: Evangelism, 7 p.m.

Friday, Dec. 14: Lutheran hospital snack bar workers, Mrs. Les Altemann and Mrs. George Jaeger.

Saturday, Dec. 15: Sunday school practice for Christmas program, 9:30 a.m.

Sunday, Dec. 16: Sunday school and adult Bible study, 9:15 a.m.; worship, 10:30 a.m.; acolytes, Darren Wacker and Craig Evans; tape ministry; Winside Kathy Leighton, Wayne Mr. and Mrs. Leo Hansen, Norfolk Mr. and Mrs. Otto Carlstens, Christian Couples, 6 p.m., caroling at the Wayne Care Centre.

Monday, Dec. 17: Womens Bible study, 9:30 a.m.; Elders, 7 p.m.

Tuesday, Dec. 18: Lutheran hospital snack bar workers, Mrs. Russell Prince and Mrs. Ray Reeg.

Wednesday, Dec. 19: Mid-week, 7 p.m.; Youth Christmas caroling, 7 p.m.

**Trinity Lutheran Church**  
(Rev. Lyle Von Seggern)  
Sunday, Dec. 16: Sunday school and adult Bible study, 9:30 a.m.; worship, 10:30 a.m.; Sunday school Christmas program, 7:30 p.m.

**United Methodist Church**  
(Rev. C.A. Sandy Carpenter)  
Sunday, Dec. 16: Worship, 8:30 a.m.; acolytes, Angie Thompson and Jennifer Volle; nursery, Elsie Longnecker and Peg-Landanger; church school, 9:30 a.m.; church school Christmas program, 10:30 a.m.; church school Christmas program, 7 p.m. with fellowship.

Tuesday, Dec. 18: FIGS potluck Christmas supper, 7 p.m.

Wednesday, Dec. 19: UMYF Christmas caroling, 4 p.m.

**SOCIAL CALENDAR**  
Thursday, Dec. 13: Girl Scouts, 3:45 p.m., fire hall; Colerice Club, Twila Kahl; Neighboring Circle Christmas party.

Friday, Dec. 14: GT Pinocchio, Gladys Reichert.

Tuesday, Dec. 18: Senior Citizens, 1:30 p.m.; TOPS, 7 p.m.

Wednesday, Dec. 19: Busy Bee Club, noon; Friendly Wednesday Club, Mrs. Wesley Ruback, Scattered Neighbors, Veryl Jackson, noon.

Thursday, Dec. 20: Theophilus, Ladies, 1:30 p.m.; Nell Thompson, Priger Sewing Club.

**Share the spirit of Christmas**

Share the love and warmth of Christmas with friends and family near and far. Beautiful Hallmark Christmas cards tell so much about how you feel.

© 1984 Hallmark Cards, Inc.

**Hallmark**

**Sub-Mor Pharmacy**

1022 Main St. Wayne 375-1444

**FEATURES TO HANDLE THE TOUGH JOBS. CAPACITY TO HANDLE THE BIG ONES.**

The Becton Dickinson is the world's first zoom lens copier. Now you can do some of your toughest copying jobs automatically. And that can make life a lot easier for you.

- The unique Beta zoom lens gives you a virtually limitless range of copy sizes from almost a 50% enlargement to a 50% reduction.
- Automatic zoom lens. The Beta zoom is made up of different size originals and give you same size copies automatically.
- Auto paper select. It enables the 450Z to copy different size originals on different size paper while using the correct paper size for you automatically.
- A full system of paper trays, auto accessories, including automatic dust and lint free rollers and rollers gives you smooth, trouble-free operation. Because they're made only for Beta copiers.

Come in today for a Beta demonstration. There's no other copier on earth like it.

**B.D. DICK**

A B Dick Company of Sioux City  
1430 Tri-View Avenue • Sioux City, Iowa  
**712-277-8945**

**1st BIRTHDAY CELEBRATION**  
Thursday-Friday-Saturday, December 13-14-15

Buy Any 12 Pack of NAPA Valvoline 10W-40W MOTOR OIL 89¢ Qt. And Receive A \$4.89 Air Filter For Only \$1.00

Stop In And Say Hi FREE COFFEE & COOKIES

**CARR AUTO & AG SUPPLY**  
Hiway 15 N. Phone 375-2687 Wayne, NE 68787

— COUPON —

**15% OFF** On any regular priced parts and merchandise in our store. Just bring in this coupon.

Coupon Expires Dec. 31, 1984

Dear Customers:  
We want to extend our sincere thanks and appreciation for your patronage this past year. We have enjoyed serving you and the many new customers we have gained with the addition of our NAPA auto and ag parts. We look forward to another successful year in serving you, our valued customer.  
To help us celebrate our 1st Birthday with NAPA, we would like to have you stop in and enjoy a cup of coffee and a cookie.  
While you're here we invite you to check out our in-store Birthday Specials. Lots of items perfect for the Christmas tree.

Thank You  
Red, Norma, Larry

**Don't discount us when it comes to Brokerage Services.**

Introducing **1st CHOICE BROKERAGE SERVICES**

We've just added one more reason why we're the bank for you. When you make your own investment decisions, we can also save you money...when you buy or sell through our new 1st Choice Brokerage Services.

And, while the savings alone is reason enough to trade brokers, we're also long on service. We provide fast, accurate order execution, with up-to-the-minute market information and automatic settlement through your existing checking or savings account. Plus, your securities are insured for safekeeping to \$2.5 million.

The next time you want to trade, think of 1st Choice first. We're just what you'd expect from your local bank!

	COMMISSION
200 shares @ \$5.00	\$41
400 shares @ \$10.00	\$59
600 shares @ \$25.00	\$95
800 shares @ \$35.00	\$147
1000 shares @ \$40.00	\$155
1500 shares @ \$50.00	\$260

**1st CHOICE BROKERAGE SERVICES**

We don't offer investment opinions or advice, so you save on commissions...as much as 50% off the standard charges of full-service brokers. The chart at right shows our representative rates.

**Member, F.D.I.C.**

**FIRST NATIONAL BANK OF WAYNE**

Main Bank - 301 Main St. 375-2525 Member F.D.I.C. Drive-In Bank - 7th & Main St. 375-3002

**Opportunity For Less.**  
Member, F.D.I.C.

# Carroll news

**EOT CLUB**  
Mrs. Dick Longe was hostess when the EOT Club met Thursday with 11 members present.  
Mrs. Larry Sievers conducted the meeting and Mrs. Dan Loberg reported on the last meeting. Roll call was a favorite dish my grandmother made.  
Plans were made to serve dinner for Carroll Senior Citizens in February and March. The first half of the membership will serve in February and the last half in March.  
A Christmas gift exchange was held and games were played with prizes going to Mrs. Harry

Hofeldt and Mrs. Kelly Hansen.  
On Friday evening, the family card party and cooperative supper was held at the Womens Club Room in Wayne with about 35 attending.  
Cards were the entertainment with prizes going to Dale Claussen, Larry Sievers, Tim Loberg, Mrs. Darlene Gathje, Mrs. Ron Sebade and Mrs. Vera Peterson.  
Mrs. Kelly Hansen will host the Jan. 3 club meeting and Mrs. Ron Sebade will assist.  
**BUSINESS CLUB**  
The Carroll Business Club and their employees had a Christmas

supper and gift exchange Thursday at Ron's Steak House.  
Mrs. Frank Gilmore is president and Mrs. Dennis Rohde, secretary.  
A meeting will be held in January with the date to be announced when election of officers will be held.  
**CRAFT CLUB**  
The Carroll Craft Club had supper Friday at the Laurel Wagon Wheel and then went to the Belden Bank Parlors for cards.  
Prizes went to Lonnie Fork, Richard Janssen, Mrs. John Williams and Mrs. Dean Junck.  
Mrs. Richard Jenkins will host

the Jan. 17 meeting at 7:30 p.m. when the lesson will be "Lace Scented Hoop."  
**DELTA DEK BRIDGE**  
Mrs. Esther Batten hosted the Delta Dek Bridge Club Thursday when prizes were won by Mrs. Alice Wagner, Mrs. Lloyd Morris and Mrs. Etta Fisher.  
Guests were Mrs. Wayne Imel of Winside, Mrs. Merlin Kenny and Mrs. Erwin Morris.  
Mrs. Merlin Kenny will host the club on Dec. 20.  
St. Paul's Lutheran Church (Mark Miller, pastor) Saturday, Dec. 15: Program practice, 1 p.m.

Sunday, Dec. 16: Sunday school, 10:30 a.m.; worship service, 11:30 a.m.  
United Methodist Church (Keith Johnson, pastor) Saturday, Dec. 15: Program practice, 9:30 a.m.  
Sunday, Dec. 16: Sunday school, 10 a.m.; worship service, 11 a.m.  
Presbyterian-Congregational Church (Gail Axen, pastor) Sunday, Dec. 16: Combined worship service at the Presbyterian Church, 10:30 a.m.

**SOCIAL CALENDAR**  
Thursday, Dec. 13: Carroll Womens Club, Lutheran Church Fellowship Hall.  
Monday, Dec. 17: Senior Citizens, fire hall.  
Tuesday, Dec. 18: Hillcrest Extension Club supper with husbands as guests, Black Knight, Wayne.  
Wednesday, Dec. 19: United Presbyterian Women; Happy Workers Social Club, Arthur Cook home.  
Mr. and Mrs. John Maher, Ann, Kevin and Sarah of Worthington,

Minn. and Elmer Smith of Hooper were Thanksgiving dinner guests in the Richard Janssen home. Mrs. Maher is a sister and Elmer is the father of Mrs. Janssen.  
Mrs. Lynn Roberts entertained at a coffee Friday afternoon to honor the birthdays of Mrs. Maurice Hansen and Mrs. Perry Johnson. Other guests were Mrs. John Rethwisch, Mrs. Clarence Morris and Mrs. Stan Morris.  
Lester Janssen of Bemidji, Minn. spent Dec. 3 in the Harold

Wittler home. He is a brother of Mrs. Wittler.  
Saturday dinner guests in the Cyril Hansen home included Mr. and Mrs. Bernard Grimes and family of Chambers, Debbie Grimes of Kearney, Randy Grimes of Norfolk, Lynette Hansen of Norfolk, Mr. and Mrs. Dan Hansen and family and Mr. and Mrs. Kelly Hansen. Mr. and Mrs. Ron Sebade and family joined the group in the afternoon.  
John Dobson of Spalding, Mrs. Harold Treptow of Littleton, Colo. and Mrs. Jay Drake were Saturday visitors in the Gordon Davis home.

# EXTRA SAVINGS FOR CHRISTMAS

All Regularly Priced Merchandise In The Store!

# 20% OFF

Plus Get An Extra 5% OFF All Sale Priced Merchandise!

## WAYNE TRUE VALUE V&S VARIETY

116 West 1st  
Wayne  
Phone 375-2082



**BILL'S** Member of AFFILIATED Foods Cooperative, Inc.

FRUIT BASKETS NOW AVAILABLE FOR CHRISTMAS

STORE HOURS: 8 a.m.-9 p.m. Monday thru Saturday 8 a.m.-6 p.m. Sunday NOT RESPONSIBLE FOR MISPRINTS

Prices effective Wednesday, Dec. 12 thru Tuesday, Dec. 18

Shurfine Buttermilk WHITE & WHEAT BREAD Large 1 1/2-Lb. Loaf **79¢**

LETTUCE **3/89¢**

Old Home FRUIT PIES **39¢** Ea.

Washington Red Delicious APPLES 3-Lb. Bag **89¢**

Shurfresh HALF & HALF Pint **49¢**

New Texas CARROTS 2-Lb. Pkg. **39¢**

Shurfresh 1% MILK Gallon **\$1.69**

Butternut COFFEE Regular, Drip, Filter Blend 3-Lb. Can **\$5.69**

Blue Bonnet Soft Spread MARGARINE Pound **\$1.19**

Royal Regular or Instant PUDDING All Flavors 3-Oz. Pkgs. **3/\$1.00**

Shurfresh Longhorn COLBY OR CHEDDAR CHEESE 1-Lb. Pkg. **\$2.39**

Grade A Large EGGS Dozen **69¢**

Christmas Tub SUGAR COOKIES 1-Lb. Tub **\$1.35**

C&H POWDERED OR LIGHT BROWN SUGAR 2-Lb. Box **77¢**

**AMAZING OFFER!** A Beautiful Set of PORCELAIN on STEEL COOKWARE

MAXX SELECT LAGER BEER 6-Pack 12-Oz. Cans **\$1.49**

Gillette Super Good ICE CREAM All Flavors 1/2-Gal. **\$1.49**

Shurfine Frozen ORANGE JUICE 12-Oz. Can **99¢**

Shurfine Frozen WHIPPED TOPPING 8-Oz. Tub **49¢**

Kitty Clover POTATO CHIPS Barbeque, Regular, Ripple, Sour Cream 8-Oz. Pkg. **89¢**

Keabler CLUB CRACKERS 1-Lb. Box **99¢**

Hershey's CHOCOLATE SYRUP 16-Oz. Can **73¢**

Shurfine FRUIT COCKTAIL 17-Oz. Can **59¢**

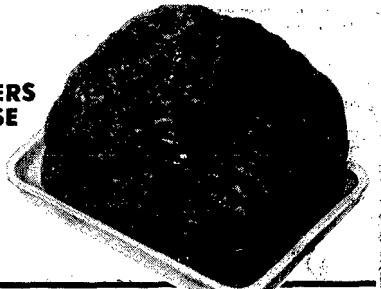
MAXX SELECT LAGER BEER 6-Pack 12-Oz. Cans **\$1.49**

## GROUND BEEF

NO RETAILERS PLEASE

100% Pure 75% Lean

# 89¢



Beef Chuck - USDA Choice **7-BONE ROAST** Lb. **\$1.39**

Hillshire Farms **POLISH SAUSAGE** Lb. **\$2.09**

Ef - In Flavor 12-Oz. Jar **HERRING CUTLETS** **\$1.79**

Shurfresh 12-Oz. Stick **SUMMER SAUSAGE** **\$1.29**

Wimmers Skinless All Meat **WIENERS** Lb. Pkg. **\$1.99**

Armour Star Gold Star Boneless **TURKEY ROAST** Lb. **\$1.59**

Hillshire Farms **SMOKED HAM SHANKS** Lb. **\$1.39**

John Marrell All Meat **FRANKS** 12-Oz. Pkg. **79¢**

John Marrell All Beef **FRANKS** Lb. Pkg. **\$1.39**

Maple River **BACON** Lb. Pkg. **\$1.29**

Fresh **OYSTERS** Lb. **\$3.99**

Christmas Drawing For 4 T.V. Sets To Be Given Away on Dec. 1, 8, 15, 22 (One Each Week)

**FREE** STARTING DEC. 13-A 10 LB. TURKEY WILL BE GIVEN AWAY EACH DAY THRU DEC. 23. BE SURE TO REGISTER!

**GROUND CHUCK** Lb. **\$1.49**

Farmland 12-Oz. Pkg. **LINK SAUSAGE** **89¢**

Lean Boneless **STEW BEEF** Lb. **\$1.69**

Shurfresh Sliced 12-Oz. Pkg. **LUNCHEON MEATS** **99¢**

Farmland - Thick or Thin Sliced **BACON** Lb. Pkg. **\$1.69**

Whole Grade A **CHICKENS** Lb. **51¢**

Family Pack **FRYERS** Lb. **49¢**

## DELI SPECIALS

**BANANA NUT BREAD** Loaf **89¢**

Wimmers **PICKLE & PIMENTO LOAF** Lb. **\$1.89**

John Marrell **LARGE BOLOGNA** Lb. **99¢**

John Marrell **BRAUNSCHWEIGER** Lb. **79¢**

**FRENCH FRIES** Large Serving - **65¢** Double Large - **\$1.30** Serving -

**BROASTED CHICKEN** **\$4.69**

With 2 Salads or 4 French Fries - **\$5.89**

**Wakefield news**

**ADVISORY COUNCIL**  
A Wakefield Community Schools Vocational Advisory Council meeting was held in the school library on Nov. 18. The meeting was called to order by Lefty Olson, president. The purpose of the council is to advise, counsel and assist in the planning, development and evaluation of the school's vocational education programs. Some ideas discussed were pick up your career day for senior students, making up a resource list of community members and having an all-purpose open house. Derwin Hartman and Joe Coble gave a report on the new accreditation rules. The next meeting will be held Wednesday, Jan. 16. Members are Lefty Olson, president; Vicki Nicholson, president-elect; Sharon Boalman, secretary; Linda Anderson, Melodie Witt, Brenda Meier, Glee Gustafson, Betty Schwarten, Alan Johnson, John Viken and Leila Fischer.

Ex-officer members are Derwin Hartman, Joe Coble, Sondra Remer, Kathy Mitchell, Becky Swanson and Susan Tyler.  
**HAPPY HOME MAKERS**  
Eleven members of the Happy Homemakers Extension Club met Dec. 5 at 2 p.m. with Mrs. Willis Kahl. They opened the meeting with the song of "Jingle Bells." Roll call was your favorite Christmas gift received as a child. The minutes of the last meeting were read and approved and the treasurer's report was given. The officers were in charge of the Christmas program followed by a gift exchange. A motion was made and approved to buy a Christmas present for one resident of the Wakefield nursing home. Mrs. Tom Turney and Mrs. William Mathes will buy the gift and deliver it to the nursing home. Mrs. Tom Turney will host the Wednesday, Jan. 9 meeting at 2 p.m.

**NEW BOOKS**  
Graves Public Library has received large print books from the Norfolk Library. They include "Alas Poor Esther" and "You Won't Let Me Finish" by Joan Fleming, "The Days of Winter" by Cynthia J. Reemon and "The Secret House of Death" by Ruth Rendell. New books with regular print include "Triple" by Kent Forrealt, "The Wild Island" by Antonia Fraser, "Sabine" and "Night Lord" by Nicolas Freeling, "Wild Fire" by Jack Fox, "In My Father's House" by E. J. Gaines, "Roman Magic" by H. Fleetwood, "Too Late, Too Late The Maiden Cried" by Joan Fleming, "Wolf to the Slaughter" by Ruth Rendell and "The Paris Drop" by Alan Furst.  
**ROYAL BAGGETTS**  
Nine members of the Royal Baggetts met Dec. 3 at the Hotel for their Christmas supper. Each member gave a reading for the program followed by a gift exchange.

**'SADDLE CLUB**  
Five families of the Golden Spur Saddle Club had their potluck Christmas supper in the William Domsch home on Saturday at 7 p.m. They held a gift exchange, followed by a social evening.  
**Christian Church**  
Sunday, Dec. 16: Bible class for all ages, 9:30 a.m.; worship and junior church, 10:30 a.m. Tuesday, Dec. 18: Womens Bible study, 2:30 p.m. Wednesday, Dec. 19: Allen area Bible study, 7:30 p.m.; Emerson-Pender-Thurston area Bible study, 8 p.m.; Wayne area Bible study, 8 p.m.  
**Evangelical Covenant Church**  
(E. Nell Peterson, pastor)  
Thursday, Dec. 13: Church board meeting, 7:30 p.m. Saturday, Dec. 15: Sunday school program practice, 9 a.m. Sunday, Dec. 16: Cradle roll party and Sunday school, 9:45 a.m.; worship, 11 a.m.; Christmas program, 7 p.m.

Monday, Dec. 17: Pastoral relations committee, 7:30 p.m. Tuesday, Dec. 18: Covenant Senior Citizens Christmas potluck dinner, 12:30 p.m. Wednesday, Dec. 19: Confirmation, 4 p.m.; Bible study, 7:30 p.m.  
**Immanuel Lutheran Church**  
(Steven L. Kramer, pastor)  
Friday, Dec. 14: Convassing committee, 7 p.m. Saturday, Dec. 15: Confirmation, 10:11:30 a.m.; Christmas program practice, 2 p.m. Sunday, Dec. 16: Sunday school, 9:30 a.m.; worship, 10:30 a.m.; convassing after service. Monday, Dec. 17: Ladies Aid worship at the care center, 2:30 p.m.; adult Bible class, 7 p.m.  
**St. John's Lutheran Church**  
(Bruce L. Schul, pastor)  
Thursday, Dec. 13: Adult confirmation, 7 p.m.; choir, 8 p.m. Friday, Dec. 14: Ruth Bible class Christmas luncheon, Mrs. Kenneth Baker, 12:30 p.m. Saturday, Dec. 15: Christmas program practice, 10:11:30 a.m.

Sunday, Dec. 16: Sunday school and Bible class, 9:15 a.m.; worship with adult confirmation, 10:30 a.m. Monday, Dec. 17: Tuesday Bible class, 12 noon; Monday Bible class, 2 p.m. Tuesday, Dec. 18: Senior Citizens fellowship potluck dinner, 12:30 p.m. Wednesday, Dec. 19: Weekday classes, 3:45 p.m.; Couple's Club, 6:30 p.m.; evening Bible class, 8 p.m.  
**St. Paul's Lutheran Church**  
(Steve L. Kramer, pastor)  
Sunday, Dec. 16: Worship, 8:30 a.m.; Sunday school, 9:30 a.m. Wednesday, Dec. 19: Ladies Aid Christmas dinner, 12:10 p.m.; mid-week school, 4:30-6 p.m.  
**Salem Lutheran Church**  
(William Conrad, interim pastor)  
Saturday, Dec. 15: Children's practice, 9:30-11 a.m. Sunday, Dec. 16: Church school, 9 a.m.; worship, 10:30

a.m.; congregational meeting; choir goes caroling. Monday, Dec. 17: Church council, 8 p.m. Wednesday, Dec. 19: Confirmation, 4 p.m.; youth choir, 5 p.m.; senior choir, 7:30 p.m. **United Presbyterian Church**  
(Richard Kargard, pastor)  
Thursday, Dec. 13: Ruth Circle Christmas brunch, Eleanor Park, 9:30 a.m. Sunday, Dec. 16: Sunday school, 10 a.m.; worship, 11 a.m.

ball with Hartington; FBLA dance. Monday, Dec. 17: Boys and girls basketball at Osmond. Tuesday, Dec. 18: High school musical, 7:30 p.m.; second and fourth grade to senior citizens center, 7:30 p.m. Wednesday, Dec. 19: Speech and drama to senior citizens center, 12:45 p.m. Mr. and Mrs. LeRoy Lunz spent Saturday and Sunday in Kearney visiting their son and wife, Mr. and Mrs. David Lunz. Dec. 6 evening guests in the Tom Henschke home to celebrate Christopher's second birthday were Mr. and Mrs. Paul Henschke, Mrs. Doug Paulson, Jamie and Justin, Mr. and Mrs. Terry Henschke, Jessica and Kala, and Mr. and Mrs. Mike Benson, Brandon and Allison, all of Wakefield, Mr. and Mrs. Chris Bargholz of Wayne, Tony Henschke of Pender and Mr. and Mrs. Jerry Rabe and Heather of Winside.

**SOCIAL CALENDAR**  
Thursday, Dec. 13: Pleasant Dell Club Christmas dinner, The Hotel, 12 noon, they will have a gift exchange and each member is to bring a plate of cookies for the afternoon lunch. Saturday, Dec. 15: American Legion Auxiliary Christmas luncheon, Legion Hall, 12:30 p.m. **SCHOOL CALENDAR**  
Thursday, Dec. 13: Girls basketball with Hartington. Friday, Dec. 14: Boys basket-

**laurel news**

**PANCAKE SUPPER**  
The Laurel Chamber of Commerce will be sponsoring a pancake supper on Saturday, Dec. 15 from 5 to 7:30 p.m. at the Laurel city auditorium. The supper will be free if you pick up your tickets at a participating Chamber member before Saturday. At the door, tickets will be \$2. All tickets will be placed in a hopper for a drawing for 20 Chamber of Commerce gift certificates.

Santa Claus will be making his pre-Christmas visit for the children of the community. All the children that visit with him in the office will receive a free gift.  
**METHODIST WOMEN**  
The Laurel United Methodist Women will be meeting on Wednesday, Dec. 19 for a 12 noon potluck dinner in the fellowship hall of the church. The greeting hostess will be Mrs. Winnie

Burns. The hostesses for the dinner are Mrs. James Urwiler, Mrs. Gary Lule, Mrs. Elmer Hatlig, Mrs. Harold Thompson Jr. and Mrs. Agnes Burns. The program "It's Bringing Again Christ To Our Lives" will be given by Mrs. Harold White, Mrs. Ruby Smith and Mrs. Kenneth Wacker. Two special mission recognition pins will be given.

**METHODIST WOMEN**  
The Logan Center United Methodist Women will be meeting today (Thursday) at 1 p.m. They will meet in the home of Mrs. Marguerite Dickey at Laurel. **Evangelical Church**  
(John Moyer, pastor)  
Sunday, Dec. 16: Sunday school, 9:30 a.m.; worship service, 10:30 a.m.; evening service, 7 p.m.

Tuesday, Dec. 18: Ladies Bible study, 9:30 a.m. Wednesday, Dec. 19: Bible study, 7 p.m. **Laurel Full Gospel**  
(513 West 3rd Street)  
Thursday, Dec. 13: Bible study, 8 p.m. Sunday, Dec. 16: Sunday school, 9:30 a.m.; worship service, 10:30 a.m.; Praise and Prayer, 7:30 p.m.

**Immanuel Lutheran Church**  
(Mark Miller, pastor)  
Thursday, Dec. 13: Seraphims, 3:30 p.m. Saturday, Dec. 15: Confirmation class, 10:11:30 a.m.; Christmas program practice, 9:30-11 a.m. Sunday, Dec. 16: Sunday school Christmas party, 9 a.m.; Bible study, 9 a.m.; worship service with communion, 10 a.m. Tuesday, Dec. 18: Church Board Christmas party at parsonage, 7:30 p.m. Wednesday, Dec. 19: Advent 111 services, 7 p.m.; choir follows.

Sunday, Dec. 16: Sunday school, 9:30 a.m.; worship services, 10:45 a.m. Tuesday, Dec. 18: Belden Bible study, 9:30 a.m.; Laurel-Concord Ministerial Association, Concordia Lutheran, 10:45 a.m. **St. Mary's Catholic Church**  
(Father Allen Martin)  
Saturday, Dec. 15: Mass, 7:45 p.m. Sunday, Dec. 16: Mass, 9:30 a.m. **United Lutheran Church**  
(Kenneth Marquardt, pastor)  
Saturday, Dec. 15: Sunday school Christmas program practice, 9 a.m.

Sunday, Dec. 16: Sunday school, 9:30 a.m.; worship services, 10:45 a.m.; Christmas program, 7:30 p.m. Tuesday, Dec. 17: Laurel-Concord Ministerial Association, Concordia Lutheran, 10:45 a.m. Wednesday, Dec. 19: Confirmation, 7:30 p.m.; choir, 8:30 p.m. **United Methodist Church**  
(Bruce Matthews, pastor)  
Thursday, Dec. 13: Logan Center-UMW, 1 p.m.; Marguerite Dickey. Sunday, Dec. 16: Sunday school, 9:30 a.m.; worship service, 10:45 a.m.; Christmas program, 7 p.m. Tuesday, Dec. 18: Ellen Erwin's pre-school program, 7 p.m. Wednesday, Dec. 19: United Methodist Women, 12 noon; Joy Choir, 3:30 p.m.; adult choir, 7:30 p.m.

**dixon news**

**TOASTMASTERS**  
At the Dec. 10 meeting of Good-morning Toastmasters, the new officers who will assume their responsibilities at the Jan. 14 meeting were installed with retiring president Patsy Reinohal presiding. Abe Lineberry was toastmaster for this Christmas guest meeting. Dorothy Mattheis spoke on "Smiles," and Bev Moyer spoke on "Voices of Christmas." Jerme Mackey was joke master, Lila Swanson, timer and word master, introduced "moiey." Mary Ann Christensen was grammarian and "ah" counter. Anita Gade was general evaluator. Martha Walton was in charge of table topics.

Sunday, Dec. 16: Worship, 9:15 a.m.; Sunday school, 10:15 a.m. **Dixon United Methodist Church**  
(Anderson Kwankin, pastor)  
Sunday, Dec. 16: Worship, 9 a.m.; Sunday school, 10 a.m. **Catholic Church**  
(Allen Martin, pastor)  
Sunday, Dec. 16: Mass, 9:30 a.m. Mr. and Mrs. Jerry Stanley, Peggy and Jeff of Brady spent the weekend in the Gerald Stanley home in Dixon.

Oakland on Friday afternoon. Miss Erickson was a sister of Mrs. Marion Quist of Laurel. Friday evening luncheon guests in the Clayton Hartman home of Dixon to help Jared celebrate his first birthday were Mr. and Mrs. Wesley Bloom, Adolph Bloom, Mrs. Dave and Mrs. Larry Hertel and LeAnn of Lawton were Sunday dinner guests in the Mrs. Wilmer Hertel home in Dixon. Mrs. Wilmer Hertel was a Friday overnight guest in the Larry Hertel home. Mrs. Gary White of Sioux City spent Friday with her mother, Mrs. J.L. Saunders of Dixon.

Mr. and Mrs. Sterling Borg of Dixon attended the funeral for Leila Erickson at Oakland Friday afternoon. Mrs. Eldred Smith of Homer and Mrs. Merlin Chambers of Dakota City accompanied them. They visited in the Dan Cox home in Sioux City en route home. Cindy Garvin of Leigh and Lori Garvin of Fremont spent the weekend in the Bill Garvin home in Dixon.

Presbyterian Church  
(Thomas Robson, pastor)  
Thursday, Dec. 13: Belden Presbyterian Women, 2 p.m. Sunday, Dec. 16: Sunday school, 9:30 a.m.; worship ser-

**TWILIGHT LINE**  
The Twilight Line Extension Club met in the home of Mrs. Marvin Harlman with Mrs. Carol Hirschert as co-hostess for their cooperative Christmas dinner on Saturday at 1 p.m. Others attending were Martha Walton, Velma Dennis, Mrs. Jack Hintz, Irma Anderson, Mrs. Kenny Kardell and Mrs. John Young. Mrs. Hintz and Mrs. Hirschert received the hostess gifts. The afternoon was spent playing UNO, followed by gift exchange of baked goods. The next meeting will be in the John Young home on Jan. 15.

Mr. and Mrs. Bob McNew of Fort Calhoun were Sunday guests in the Irma Anderson home in Dixon. Mr. and Mrs. Gene Quist, Jeremy, Randy and Jimmy of Dixon attended the funeral for Leila Erickson, 61, at the Westside Methodist Church near

cord returned home Friday from the St. Joseph Hospital in Omaha where she had been a surgical patient. Mr. and Mrs. Larry Hertel and LeAnn of Lawton were Sunday dinner guests in the Mrs. Wilmer Hertel home in Dixon. Mrs. Wilmer Hertel was a Friday overnight guest in the Larry Hertel home. Mrs. Gary White of Sioux City spent Friday with her mother, Mrs. J.L. Saunders of Dixon.

Logan Center United Methodist Church (Bruce Matthews, pastor)

**CLASSIFIEDS**  
Cards of Thanks  
\$2.50 for 50 words  
\$4.00 for 50-100 words  
\$6.50 for 100-150 words  
\$8.00 for 150-200 words

**GAY THEATRE PG**  
The story of a woman's fight for her land, her children and her dreams for a future.  
Dec. 14, 20 or 7:20  
Sargun Night Tuesday  
Sargun Nightline Sunday  
1:30 Show  
Winter-Tues. 9:20

**PLACES IN THE HEART**  
Starts Dec. 21 for Christmas  
Walt Disney's "Pocahontas" G. and Schweinberger "The Terminator"

**Hollywood Video**  
New Tapes - now over 175 titles  
\$7.50 bonus package with new Magnavox VCR - \$62.50 Net  
Early rental discounts  
Free popcorn  
Gift certificates

**Merry Savings**  
FOR ALL...ON HOLIDAY FOODS\*  
Prices Good Dec. 13 through Dec. 18, 1984  
Bulk PICKLED HERRING \$1.99 Lb.  
POTATO SAUSAGE \$1.49 Lb.  
Cocktail Rye BREAD 89c Loaf  
Spiced - Cooked SPECIALTY PINWHEEL \$2.69 Lb. MEATS  
Home Cured - Dry BONE-IN HAMS \$1.69 Lb.  
See Our Large Selection of Domestic and Imported Bulk Cheeses  
DON'T FORGET TO ORDER YOUR STEAK GIFT BOXES OR OTHER ASSORTED MEAT AND CHEESE GIFTS  
CALL TODAY  
**JOHNSON'S FROZEN FOODS**  
116 W. 3rd Wayne 375-1100  
HOURS: Mon.-Fri. 8 a.m.-6 p.m. Saturday 9 a.m.-1 p.m.

**WIN! At Sav-Mor**  
CHILDREN'S DRAWING 36" Care Bear  
ADULT DRAWING Set of Three Solid Walnut Stacking Tables  
Both to be given away on Christmas Eve.  
REGISTER FOR EITHER IN THE LOFT.  
**Sav-Mor Pharmacy**  
1022 Main St. Wayne 375-1444  
ACROSS FROM THE COLLEGE

**Due to the TREMENDOUS RESPONSE TO OUR CHRISTMAS SUPER SALE WE'VE ADDED EVEN MORE ITEMS TO OUR LIST!**  
\$2.00 Off All Russell Baseball Shirts  
**SAVE 35%**  
Selected Dodger and Russell Shorts. Only \$3.00/Each.  
**SAVE UP TO 60%**  
Savings Up To 50% On Other Selected Items  
Don't Forget, We Have Gifts For All Ages  
Open 7 Days A Week Until Christmas  
**WAYNE SPORTING GOODS**  
375-3577 1 Mile East on Hwy. 35

**Improve your chances with Pioneer® brand hybrids.**  
Mother Nature ultimately decides how good your corn is going to be. But by selecting the right "set" of Pioneer hybrids you've taken a big step toward improving your chances. Ask your Pioneer salesman how these numbers "fit" your corn program.  
3377 3378  
3475 NEW  
3713 3551  
**BILL FLETCHER**  
Re. 375-1179  
Off. 375-1527  
**PIONEER**  
BRAND PRODUCTS  
The Location of Pioneer and variety appearing on the label is part of the name of sale. a registered trademark of Pioneer Hi-Bred International, Inc., U.S.A.



# Concord news

**WELFARE CLUB**  
The Concord Womens Welfare Club met Dec. 5 for their annual Christmas luncheon at the Tekla Johnson home with Margaret Huetig, Carol, Erwin, Esther Peterson, Deb Rewinkle and Ella Anderson as co-hostesses. A short business meeting was held. The creed was read by the group and reports were read. Roll call was answered by 14 members with a memorable Christmas program. A motion was made to buy gifts for Concord residents in the care center in Wakefield. Cards were signed to Lucille Olson, Hanna Anderson and Fern Conger.

Esther Peterson and Tekla Johnson had December birthdays and birthday coffee and cake were served. Silent sisters brought cakes for the honorees. Elja Anderson had Esther Peterson's cake and Irene Hanson brought Tekla Johnson a cake.

**J.C.'S**  
The J.C.'s Home Extension Club held their Christmas meeting in the home of Carolyn Hanson the evening of Dec. 4. Mrs. Hanson served a dessert lunch. She also led a short business meeting. The group read the creed and reports were read. Roll call was answered by 10 members with a favorite Christmas song and carol. A card was signed for the club's Hillcrest person to remember and a gift for the Christmas tree will be bought. A monetary donation will be sent to "Good Neighbors" in Norfolk. Evelina Johnson received the hostess gift.

Irene Magnuson had the entertainment for the afternoon and read "Tradition of Dressing a Tree" and "Good Old Days" followed by group singing of Christmas songs. She led a pencil game with Margaret Huetig as the winner. She also read poems "Holiday Wishes" and "Light A Candle."

**SENIOR CITIZENS**  
On Wednesday, Dec. 19 at 12 noon the Concord-Dixon Senior Citizens Christmas potluck dinner, sermonette, December meeting and blood pressure clinic will be held.

**MISSIONARY SOCIETY**  
The Evangelical Free Church Womens Missionary Society ladies held their annual Christmas party on Dec. 3 at 7:30 p.m. at the Senior Center in Laurel with 45 attending.

A gift exchange was held.

**EVANGELICAL**  
Free Church (John Westerholm, pastor)  
Saturday, Dec. 15: KOK rehearsal, 12:45 p.m.; Sunday school Christmas practice, 1:30 p.m.  
Sunday, Dec. 16: Sunday Bible school, 10 a.m.; morning worship service, 11 a.m.; evening service, KOK choir will sing, 7:30 p.m.  
Wednesday, Dec. 19: Sunday

A skit, entitled "Was the Night Before Christmas" was given by Vicky and Judy Carlson, Rhonda Bloom, Sherri Palefield and Judy Kvols. Joy Grosvenor and Judy Harfman sang "What Child is This?" Christmas carols were sung by the group.

A gift exchange followed the program and new prayer sisters were assigned.

**St. Paul's Lutheran Church**  
(Steven Kramer, pastor)  
Sunday, Dec. 16: Morning worship service, 8:30 a.m.; Sunday school, 9:30 a.m.  
Dec. 5 morning coffee guests in the Brent Johnson home in honor of the host's birthday included Mrs. Sandy Hall of Carroll, Mrs. Morris Kvols, Kayla Macklin, Mrs. Rodney Kvols and Tyler, Mrs. Roger Kvols and Greg, Mrs. Hazel Bruggeman, Mrs. Florence Fredricksen, Mrs. Shirley Fredricksen, Mrs. Marcia Lipp and David and Mr. and Mrs. Dean Bruggeman, all of Laurel; Mrs. Naoma Quist of Dixon; Mr. and Mrs. Ernest Swanson; Mrs. June Erwin, Wyatt and Blake, Mrs. Ardyce Johnson, Brad and Chad Johnson.

**Mr. and Mrs. Neal Peterson** and Julie of Columbus were weekend guests of Esther Peterson, honoring her birthday.

Robert, the John Taylors and the Ray Kniefels of Dixon.

the Norman Anderson home. Mrs. Sieck and children were Sunday overnight guests.

**Concordia Lutheran Church**  
(David Newman, pastor)  
Saturday, Dec. 15: Sunday school Christmas practice, 9:30 a.m.  
Sunday, Dec. 16: Sunday school and Bible classes, 9:30 a.m.; short congregational meeting before worship service; morning worship service, 10:45 a.m.  
Tuesday, Dec. 18: Bible study, 9:30 a.m.; ministerial meeting, Concord, 11:45 a.m.  
Wednesday, Dec. 19: Confirmation, 7 p.m.; senior choir practice, 8 p.m.

**Evangelical Free Church**  
(John Westerholm, pastor)  
Saturday, Dec. 15: KOK rehearsal, 12:45 p.m.; Sunday school Christmas practice, 1:30 p.m.  
Sunday, Dec. 16: Sunday Bible school, 10 a.m.; morning worship service, 11 a.m.; evening service, KOK choir will sing, 7:30 p.m.  
Wednesday, Dec. 19: Sunday

**Mrs. Rick Mann** entertained at her home Dec. 11 honoring Jaime's eighth birthday. Afternoon guests were Angie Martindale, Amber Martindale, Cory Clarkon, Katie Newton, Nicole Hirschmann, Teresa Rastede, Tricia Krie, Darcie Lubberstedt, Dawn Wickell, Kristy McCoy, Kim Haisch and Jeanie Hanson.

**Mr. and Mrs. Andy Mann** were honored for their 47th wedding anniversary Dec. 5 with an evening dinner with their family at Beckers in Norfolk. Other guests were Mrs. Dean Janke, Carla Janke and Mrs. Charles Peters, all of Winside, the Andrew Manns and son of Nortolk and the Roger Thompson family of Newman Grove.

Esther Peterson accompanied by Mrs. Ernest Swanson attended the funeral service of Arvid Johnson, 85, at Genoa on Dec. 4. He died Nov. 30. He was the father of Mrs. Doniver Peterson of Gering, formerly of Wayne.

**Evangelical Free Church**  
(John Westerholm, pastor)  
Saturday, Dec. 15: KOK rehearsal, 12:45 p.m.; Sunday school Christmas practice, 1:30 p.m.  
Sunday, Dec. 16: Sunday Bible school, 10 a.m.; morning worship service, 11 a.m.; evening service, KOK choir will sing, 7:30 p.m.  
Wednesday, Dec. 19: Sunday

**Friday afternoon birthday** guests of Esther Peterson were Ruben Goldberg of Wakefield, Pearl Magnuson of Wayne, Clara Swanson and Tekla Johnson.

**Guests in the Fred Mann** home the evening of Dec. 3 honoring the birthdays of Fred Mann and Jaime Mann were the Rick Manns, Jaime and Missy and Myron and Mary Peterson.

**Vincent Meyer** of Lincoln spent the Dec. 2 weekend with the Andy Manns.

**Mr. and Mrs. Joseph Landy** of Virginia Beach, Va. were Thanksgiving guests in the Gary Rastede home.

**Friday afternoon birthday** guests of Esther Peterson were Ruben Goldberg of Wakefield, Pearl Magnuson of Wayne, Clara Swanson and Tekla Johnson.

**Dec. 2 birthday** guests in the Charles Nelson home honoring Erich's fifth birthday was Shellee Taylor of Norfolk, the Robert Taylors, the Earl Nelsons and

**Dec. 2 birthday** guests in the Charles Nelson home honoring Erich's fifth birthday was Shellee Taylor of Norfolk, the Robert Taylors, the Earl Nelsons and

**The Norman Andersons** spent Dec. 5-7 in the Jerry Stanley home at Brady.

**Pastor Albert Sieck** and family of Spencer were Sunday guests in



## Get your paws on Care Bears

Play It Safe! Care Bear Sticker Book

Caring and Sharing A Care Bear Sticker Book

Pizza Hut is giving away two lovable, huggable Care Bears. Register now and maybe, on Dec. 22, one of these bright, colorful characters will be knocking on your door.

**Pizza Hut**

© 1984 American Greetings Corp.™ designates trademarks and character designs of American Greetings Corp. Pizza Hut® Authorized User. Offer good at participating Pizza Hut® restaurants. Prices may vary. © 1984 Pizza Hut, Inc.

Prices Effective Wednesday-Sunday, December 12-15, 1984

33% OFF ALL ARTIFICIAL CHRISTMAS TREES Shop early for best selection.

BOXED CHRISTMAS CARDS 14 or 16 count boxes, 2 themes to choose from. Reg. 2.49 \$1.59

STORE HOURS Monday-Friday 9 a.m.-9 p.m. Saturday 9 a.m.-8 p.m. Sunday 11 a.m.-6 p.m.

# Great Gifts Low Prices

This Christmas Pamida Makes Everyone Feel Great!

East Hwy. 35 - Wayne, NE

## SEASON'S GREETINGS FROM THE FARMERS STATE BANK STAFF

BEV HITCHCOCK, Vice President, Cashier, would be happy to visit with you on time deposits, IRA's, agricultural loans and bond investments.

SANDY HALL is Manager of our Insurance Agency. Stop in for a review of your coverage on your auto, home, farm, business, and health insurance policies.

SUSAN GILMORE, Vice President, is knowledgeable in FmHA guarantees, and could service you in commercial and personal loans.

NANCY DAVIS will assist you in opening a checking and savings account or open your safe deposit box with us.

FARMERS STATE BANK WISHES YOU A MERRY CHRISTMAS AND A VERY PROSPEROUS 1985

FULL-SERVICE BANK **FARMERS State Bank** MEMBER F.D.I.C. CARROLL, NEBRASKA

**79.99**

Kraco auto sound system, AM/FM stereo with electronic tuning. Has auto stop cassette and 5 in. slimline speaker system. ETR10.

**139.95**

Reg. 179.95

Genie garage door opener with powerful 1/2 H.P. motor that lifts any residential garage door, wood, metal or fiberglass. Digital radio controls set your own personal codes. GS810.

Extra Genie transmitter, AT90 25.00

**14.99**

Complete with Birth Certificate and Passport 19-Inches Tall

Once upon a time there was a doll without a name, just waiting for a little girl like you: to name, own, and love it... The No Name Babe, 19" tall, made in Spain. Reg. 19.99

**21.99**

Musical car horn, plays 76 tunes. Has dashboard mounted keyboard. With mounting accessories. 7650LB.

**31.99**

Munsey Belgium family waffle maker. Reg. 36.99

Toastermaker single waffle maker. Reg. 19.99; Only 17.99

**39.99**

Shopcraft drill press. Reg. 99.99

**14.99**

Sinister stronghold of Marvel Super Villains. Reg. 19.99

Marvel super hero figurines. Reg. 3.99. Now 2/5.00



**ORDINANCE NO. 320  
AN ORDINANCE SETTING FORTH THE  
POLICE AND FINANCIAL STATEMENT  
INITIATIVE AND REFERENDUM  
MEASURES.**

BE IT ORDAINED BY THE CHAIRMAN AND BOARD OF TRUSTEES OF THE VILLAGE OF WINDSE, NEBRASKA...

**ORDINANCE NO. 321  
AN ORDINANCE TO PROVIDE FOR FILLING A VACANCY BY SPECIAL ELECTION...**

BE IT ORDAINED BY THE CHAIRMAN AND BOARD OF TRUSTEES OF THE VILLAGE OF WINDSE, NEBRASKA...

**ORDINANCE NO. 322  
AN ORDINANCE TO CHANGE NOTICE REQUIREMENTS FOR ELECTIONS...**

BE IT ORDAINED BY THE CHAIRMAN AND BOARD OF TRUSTEES OF THE VILLAGE OF WINDSE, NEBRASKA...

**ORDINANCE NO. 319  
AN ORDINANCE PERTAINING TO COMPENSATION OF OFFICERS...**

BE IT ORDAINED BY THE CHAIRMAN AND BOARD OF TRUSTEES OF THE VILLAGE OF WINDSE, NEBRASKA...

**ORDINANCE NO. 318  
AN ORDINANCE TO AMEND THE PROVISIONS REQUIRING AN ANNUAL AUDIT...**

BE IT ORDAINED BY THE CHAIRMAN AND BOARD OF TRUSTEES OF THE VILLAGE OF WINDSE, NEBRASKA...

**ORDINANCE NO. 317  
AN ORDINANCE TO CHANGE NOTICE REQUIREMENTS FOR ELECTIONS...**

BE IT ORDAINED BY THE CHAIRMAN AND BOARD OF TRUSTEES OF THE VILLAGE OF WINDSE, NEBRASKA...

**ORDINANCE NO. 316  
AN ORDINANCE TO PROVIDE FOR FILLING A VACANCY BY SPECIAL ELECTION...**

BE IT ORDAINED BY THE CHAIRMAN AND BOARD OF TRUSTEES OF THE VILLAGE OF WINDSE, NEBRASKA...

**ORDINANCE NO. 315  
AN ORDINANCE TO CHANGE NOTICE REQUIREMENTS FOR ELECTIONS...**

BE IT ORDAINED BY THE CHAIRMAN AND BOARD OF TRUSTEES OF THE VILLAGE OF WINDSE, NEBRASKA...

**ORDINANCE NO. 314  
AN ORDINANCE TO CHANGE NOTICE REQUIREMENTS FOR ELECTIONS...**

BE IT ORDAINED BY THE CHAIRMAN AND BOARD OF TRUSTEES OF THE VILLAGE OF WINDSE, NEBRASKA...

**ORDINANCE NO. 313  
AN ORDINANCE TO CHANGE NOTICE REQUIREMENTS FOR ELECTIONS...**

BE IT ORDAINED BY THE CHAIRMAN AND BOARD OF TRUSTEES OF THE VILLAGE OF WINDSE, NEBRASKA...

**ORDINANCE NO. 312  
AN ORDINANCE TO CHANGE NOTICE REQUIREMENTS FOR ELECTIONS...**

BE IT ORDAINED BY THE CHAIRMAN AND BOARD OF TRUSTEES OF THE VILLAGE OF WINDSE, NEBRASKA...

**ORDINANCE NO. 311  
AN ORDINANCE TO CHANGE NOTICE REQUIREMENTS FOR ELECTIONS...**

BE IT ORDAINED BY THE CHAIRMAN AND BOARD OF TRUSTEES OF THE VILLAGE OF WINDSE, NEBRASKA...

**ORDINANCE NO. 310  
AN ORDINANCE TO CHANGE NOTICE REQUIREMENTS FOR ELECTIONS...**

BE IT ORDAINED BY THE CHAIRMAN AND BOARD OF TRUSTEES OF THE VILLAGE OF WINDSE, NEBRASKA...

**ORDINANCE NO. 309  
AN ORDINANCE TO CHANGE NOTICE REQUIREMENTS FOR ELECTIONS...**

BE IT ORDAINED BY THE CHAIRMAN AND BOARD OF TRUSTEES OF THE VILLAGE OF WINDSE, NEBRASKA...

**ORDINANCE NO. 308  
AN ORDINANCE TO CHANGE NOTICE REQUIREMENTS FOR ELECTIONS...**

BE IT ORDAINED BY THE CHAIRMAN AND BOARD OF TRUSTEES OF THE VILLAGE OF WINDSE, NEBRASKA...

**ORDINANCE NO. 307  
AN ORDINANCE TO CHANGE NOTICE REQUIREMENTS FOR ELECTIONS...**

BE IT ORDAINED BY THE CHAIRMAN AND BOARD OF TRUSTEES OF THE VILLAGE OF WINDSE, NEBRASKA...

**ORDINANCE NO. 306  
AN ORDINANCE TO CHANGE NOTICE REQUIREMENTS FOR ELECTIONS...**

BE IT ORDAINED BY THE CHAIRMAN AND BOARD OF TRUSTEES OF THE VILLAGE OF WINDSE, NEBRASKA...

**ORDINANCE NO. 305  
AN ORDINANCE TO CHANGE NOTICE REQUIREMENTS FOR ELECTIONS...**

BE IT ORDAINED BY THE CHAIRMAN AND BOARD OF TRUSTEES OF THE VILLAGE OF WINDSE, NEBRASKA...

**ORDINANCE NO. 304  
AN ORDINANCE TO CHANGE NOTICE REQUIREMENTS FOR ELECTIONS...**

BE IT ORDAINED BY THE CHAIRMAN AND BOARD OF TRUSTEES OF THE VILLAGE OF WINDSE, NEBRASKA...

**ORDINANCE NO. 303  
AN ORDINANCE TO CHANGE NOTICE REQUIREMENTS FOR ELECTIONS...**

BE IT ORDAINED BY THE CHAIRMAN AND BOARD OF TRUSTEES OF THE VILLAGE OF WINDSE, NEBRASKA...

**ORDINANCE NO. 302  
AN ORDINANCE TO CHANGE NOTICE REQUIREMENTS FOR ELECTIONS...**

BE IT ORDAINED BY THE CHAIRMAN AND BOARD OF TRUSTEES OF THE VILLAGE OF WINDSE, NEBRASKA...

# 10b - classifieds

The Wayne Herald, Thursday, December 13, 1984

## special notice

### Goldenrod Hills Is Accepting Bids For A 1985 Nine Passenger Station Wagon.

Automatic transmission, 8 cylinder, air-conditioner, tinted glass, black sidewalls, radio, power steering and power brakes.

Please mail sealed bids to:  
**GOLDENROD HILLS CAA**  
Box 10, Walthill, Ne. 68067  
Closing date: 12-13-84

We reserve the right to accept or reject any or all bids.

### WAYNE CAMPUS SHOP JUST ARRIVED!

Black & Gold Sweat Suits,  
Hooded Sweat Shirts,  
Crewneck Sweat Shirts,  
Sweat Pants.  
Infant to Youth Sizes.  
Excellent Christmas Gifts

Lower Level of Student Center,  
Wayne State College

INCOME TAXES prepared. I have moved my office to the professional building 112 W. 2nd. Ray Buell Tax Service. 375-4488. d10ff

NOW OPEN Sundays from 12-4 p.m. for your convenience. Arnie's Ford Mercury, 375-3780 days, 375-3422 evenings. Wayne, Neb. d24ff

## real estate

FOR SALE: Wakefield residence. Large corner lot. House in need of repairs, but ideal for investor, commercial builder or weekend repair man. Great potential for rental property or personal residence. Only \$8,500 for house and lots. Contact Pat Gross, Triangle Finance, Box 111, Wayne, Neb. 68787. Phone 375-1132. d22ff

FOR SALE: In Concord, Neb. Nice 4 bedroom house \$14,000, \$4,000 down balance 10 yr contract at 8%. Will carry paper. Call 584-2385. d13ff

## NOTICE FOR BIDS

Sealed bids will be accepted by the Wayne County Commissioners until 10:00 a.m. December 14, 1984 for the following two vehicles previously used in the Sheriff's Department fleet:  
1 - 1979 Buick LeSabre - 4 Door (Engine and Transmission need repair)  
1 - 1976 Ford LTD - 4 Door (Engines needs repair).  
Both vehicles will be sold in "AS IS" condition. Vehicles may be inspected during regular business hours at the Wayne County Sheriff's Office. Bids will be opened at the regular session of the Wayne County Commissioners meeting, December 18, 1984. We reserve the right to accept or reject any or all bids submitted.

## Regular Rates

Standard Ads —  
20¢ per word  
Third consecutive run free

## help wanted

### HELP WANTED

The Milton G. Waldbaum Company is taking applications for truck drivers for future openings in the transportation department. A valid commercial drivers license, a current DOT physical, and one year's experience with tractor trailer is required.

Please contact Paul Utemark for additional information at 287-2211 ext. 101.

An Equal Opportunity Employer

### NOTICE OF VACANCY

**AUDIO-VISUAL SERVICES TECHNICIAN**  
Hiring Rate \$989/month plus benefits package. Responsible for the organization and operation of audio-visual equipment services in the Instructional Resources Center of a small State College. Three years of training or experience in audio-visual equipment services required. Certification by the Association of Audio-visual Technicians desirable. Specific duties include maintenance and repair of audio-visual equipment; control, operate and select equipment; operate instructional cable TV system. Must have electronics knowledge/skills to repair AV and video equipment, and to organize and deliver services. Application form and job description available on request. Completed application form and letter of application and references must be submitted on/before December 18, 1984, to: Director of Support Staff Personnel, Wayne State College, Wayne, Nebraska 68787. Phone: 402-375-2200, Ext. 485. Equal Opportunity Employer.

TECHNICIAN WANTED: We now have an opening for an experienced service technician. Salary related to your experience. Apply in person or phone for an appointment. Ask for Mr. Al Heikes, Service Manager. 402/375-3600, Mike Perry Chevrolet-Oldsmobile, Inc. West Hwy. 35, Wayne, Nebraska. 68787 d31ff

FEDERAL STATE and Civil Service jobs available. Call 1-(619)569-8304 for information. 24 hours. d10ff

PART TIME HELP WANTED: Looking for a responsible adult to attend elderly lady through noon hour. If interested, please call Betty 375-4341 evenings. 375-2600 days. d13ff

LIVE-IN SITTER nonsmoker, over 17, up to \$850 per month, relocation paid. (713) 667-1510. d315

## wanted

WANTED: Big round bales of alfalfa Call 439-2589 after 7 p.m. d131ff

## work wanted

WILL DO BABYSITTING in my home days 8-5. Reliable. Call Julie 375-4985 d131ff

CHIMNEY SWEEP. Experienced. Call 375-4100 after 5:30. Monday, Thursday, Friday. Anytime on weekends. It is now time to clean your chimney. d1013

WILL DO babysitting in my home. Monday-Friday, some evenings. Part-time also. 375-3826. d13

## for sale

HANDMADE fabric photo albums for Christmas. 375-3826. d13

GRAVEL, SAND AND BLACK DIRT: Pilger Sand and Gravel, 396-3303 or Ron Willers, 396-3142. d24ff

## land for sale

**LAND FOR SALE**  
80 tillable producing acres, 4 miles west of Wayne, Neb. (S1/2SW1/4 32-27-3) by owner.  
L. Miller  
51 W. Erie  
Chicago 60610  
Phone Anytime:  
(312) 337-7612

## pets

FOR SALE: AKC miniature Schnauzers. Ready for Christmas. Call 256-3985. D61ff

## for rent

APARTMENT FOR RENT: Call 375-2252. s18ff

FOR RENT: Two bedroom, fully carpeted, furnished apartment. Accommodates 4 nicely. Large living area with wood burning stone fireplace. Private entrance. \$200 per month for 2, \$240 per month for 3, \$280 per month for 4 — which includes all utilities, 3 miles east of Wayne on Hwy. 35, 1/4 mile south. New brick home. Call 375-3075. d13

## mobile homes

FOR SALE or RENT: Two bedroom trailer. New furnace. Clean. Call 385-3506 or 783-2193. D6,13,20

*Santa Says*  
**"LET'S MAKE A DEAL"**



1984 Suburban, 3 seats, diesel, tilt, cruise, air, rally wheels, 8,000 miles, perfect condition, almost \$19,000 new.  
**SALE PRICE \$15,000**



1984 GMC Rally STX Van, 8 passenger, front and rear air, tilt, cruise, AM/FM stereo cassette, rear heater, rally wheels, 6.2 diesel, great mileage. Only 8,900 miles. \$18,800 new.  
**SALE PRICE ONLY \$15,250**



1983 Buick Park Avenue Sedan, loaded with options, 307 V8 gas engine, 34,000 miles, beautiful. Book price \$12,750.  
**SALE PRICE \$11,500**

1982 Pontiac Phoenix LJ, 2 door, tilt, cruise, air, custom interior, wire covers, 22,000 one owner miles. Really nice.  
**\$6,500**

1979 Camaro, 2 to choose from.  
1978 Volare Wagon, real clean.  
1978 Grand Prix LJ, 33,000 miles.  
1979 Ford T-Bird.  
1975 Ford Elite.  
1982 GMC Conversion Van, sharp.  
**\$5,900**

1981 Buick LeSabre Limited, 4 door, tilt, cruise, air, power seats, AM/FM stereo, one owner, 55,000 miles. Very well cared for Buick.  
**\$5,900**

1982 GMC 4x4 Diesel, 33,000 miles.  
1980 Chevrolet 4x4, 6 cylinder, 4 speed, air.  
1978 Ford Super Cab, camper special  
1973 Ford 1/2-Ton Pickup, \$500

FRESH TRADE-INS COMING IN EVERY DAY  
GMAC FINANCING AVAILABLE

**Ellingson MOTORS, INC.**  
• CADILLAC • GMC • BUICK • PONTIAC •  
Phone 375-2355 Wayne, Ne. West 1st St.

<p>COUPON <b>\$2.00 OFF</b> Complete Hair Style Holiday Specials Ask for Lorree or Sandy Limit 1 Coupon Per Person Expires Dec. 31</p>	<p>COUPON <b>10% OFF</b> Complete Perm Holiday Specials Ask for Lorree or Sandy Limit 1 Coupon Per Person Expires Dec. 31</p>	<p>COUPON <b>\$1.00 OFF</b> Hair Cut Holiday Specials Ask for Lorree or Sandy Limit 1 Coupon Per Person Expires Dec. 31</p>
--	---	---

**THE HEADQUARTERS**  
375-4020 Sheryl Polhamus, owner 320 Main

**NEW NORELCO ROTATRACT RAZOR**

Helpful Christmas Hints from Norelco



Only **\$39.95**

For the finest Norelco shave ever!

Now you can get faster and closer shaves with this Norelco Rotatract® Razor... with never a nick or a cut... never a "Gotcha!" 45 lifters raise hair up so 45 cutters can razor hair off for the closest Norelco shave ever. Cleaning is a breeze with the "flip-top" cleaning feature. And the sideburn and mustache trimmer grooms at the touch of a button. New, sleek design with handy on/off switch. Ready to give in attractive gift box.

**Norelco TRIPLEHEADER ROTARY RAZOR**

ONLY **\$29.99**

- 36 self-sharpening blades under 3 floating Microgroove™ heads for close shaves.
- Dual voltage for worldwide use.
- Angled, pop-up trimmer.
- On/Off switch.
- Pop-off heads.
- Convenient, compact travel wallet.
- 30 Day Manufacturer Money Back Guarantee.

**NORELCO REPLACEMENT HEADS, MODEL HP1912/3**  
For use with Norelco Tripleheader® Razors only (does not fit Rotatract® models) to keep your razor in top-notch working condition. **ONLY \$00.00**

Look for the complete line of Norelco Razor Accessories for your shaving needs.

© North American Philips Corporation 1984

**San-Mor Pharmacy**  
1022 Main St. Wayne 375-1444  
ACROSS FROM THE COLLEGE

**CHRISTMAS TREES**

WHITE PINE  
SCOTCH PINE

**WREATHS**  
PLAIN \$4.00 And Up  
DECORATED \$6.00 And Up

**BIRD SEED**  
SUNFLOWER SEED 29¢ Lb.  
THISTLE SEED 85¢ Per Lb.  
EARLY BIRD SEED 25¢ Per Lb.

**COUNTRY NURSERY**  
Qualified Landscape Designing  
Hours: Mon-Fri. 8:30-5:30  
Sat. 8:30-5:00  
Sun. 1-5  
Brent Pedersen  
Rt. 2, Wayne, NE 68787  
(402) 375-4329